



**DHET New Universities Project Management Team**

# **Standard scope of professional services associated with the delivery of a package**

**March 2014**

**Issued by:**

**DHET New Universities Project Management Team**

# Standard scope of professional services associated with the delivery of a package

## Contents

Introduction.....	i
1 Scope .....	1
2 Normative references .....	2
3 Terms and definitions .....	2
4 General requirements.....	7
5 Services provided by the programme manager / project manager .....	7
6 Services provided by the procurement leader.....	9
7 Services provided by the project leader, lead designer, designer and cost consultant .....	9
7.1 General.....	9
7.2 Drawings .....	12
7.3 Services provided by the project leader, lead designer, designer and cost consultant.....	13
7.3.1 Stage 3 (Package preparation) services .....	13
7.3.2 Stage 4 (Package definition) services .....	13
7.3.3 Stage 5 (Design development) services.....	13
7.3.4 Stage 6 (Design documentation) services .....	13
7.3.5 Stage 7 (Works), Stage 8 (Handover) and Stage 9 (Close out) services .....	20
7.4 Procurement services .....	20
8 Services provided by the contract manager .....	20
9 Services provided by the supervising agent.....	25
10 Services provided by the health and safety agent .....	26
Annexure A Incorporating the provisions of this standard in the scope of work of contracts .....	29
Annexure B Designer's occupational health and safety declaration in terms of the Construction Regulations 2014 .....	32
Annexure C: Health and safety agent's declaration.....	33
Annexure D: Completion certificates.....	35

## Introduction

The delivery of construction works needs to be managed and controlled in a logical, methodical and auditable manner. The starting point in the development of any delivery management system is to identify the information which needs to be developed and accepted by the client at a particular point in the delivery process to enable a project to be advanced i.e. at a gate (control point). The stages in the delivery of construction works can then be defined as the activities that need to take place between such points. These stages enable the work flow (sequence of connected activities) toward the attainment of an end of stage deliverable to be developed and culminate in gates (control points) which can be used to provide assurance that the proposed works:

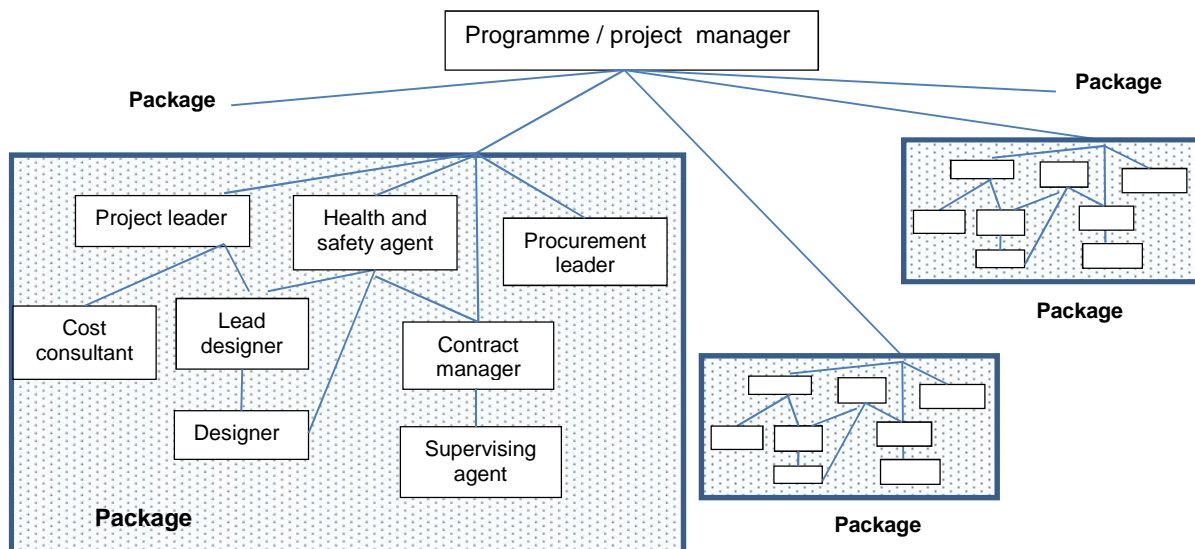
- remains within agreed mandates;
- aligns with the purpose for which it was conceived, and
- can progress successfully from one stage to the next.

The New Universities Project Management Team's Procurement and Delivery Management System for Infrastructure Projects establishes processes, procedures and methods for the implementation of infrastructure projects in a staged, systematic, disciplined, uniform, integrated and auditable manner. It describes the stages within which planned maintenance, construction, refurbishments, rehabilitations, extensions, alterations and demolitions are carried out, identifies the applicable construction procurement system and provides a comprehensive control framework which requires decisions to be made at control points. Professional services need to be provided within this control framework.

This document establishes requirements for those persons providing professional services in the implementation of one or more of the stages described in the Procurement and Delivery Management System for Infrastructure Projects, namely to do whatever is necessary to develop an end of stage deliverable. Such services may be applied to a single project comprising one or more packages (works which have been grouped together for delivery under a single contract or a package order) or a programme of projects. This document as such provides a scope of work for the following functional roles:

- programme / project manager
- procurement leader
- project leader
- contract manager
- lead designer
- designer
- cost consultant
- supervising agent
- health and safety agent

The basic lines of reporting and assigned responsibilities for each of these functional roles for each package within a programme of projects or an independent project are as follows:



**Designation**

**Overview of responsibilities**

**Programme / Project manager**

Manage the implementation of a programme of projects / an independent project involving the delivery and / or planned maintenance of infrastructure in a manner that:

- enables both the implementer and its client to achieve their objectives; and
- all projects are developed and managed in terms of a common procedural approach and integrated with the implementer's administrative processes and are institutionalised

**Project leader**

Direct the project team including:

- the establishment of the overall strategy for the development and delivery of the deliverable;
- the monitoring and integration of the activities of the project team;
- the development and maintenance of a schedule and the monitoring of progress towards the attainment of the deliverable; and
- the briefing of, the reporting to and the obtaining of decisions and acceptance of a deliverable

**Lead designer**

Establish and refine the design approach or solution to achieve the required quality, health and safety and other required standards and is co-ordinated within the project team  
Co-ordinate the advice and input of designers and cost consultants

**Designer**

Provide design or conditional assessment services relating to the provision or maintenance of infrastructure

**Cost consultant**

Provide independent and impartial estimation and control of the cost of constructing, rehabilitating and refurbishing infrastructure by means of one or more of the following:

- accurate measurement of the works,
- comprehensive knowledge of various construction systems and the costs of alternative design proposals, construction methods and materials, or
- the application of expert knowledge of costs and prices of work, labour, materials, plant and equipment required

**Procurement leader**

Oversee the development of the procurement documents and manage the procurement process from the advertisement of tenders to the award of the contract as a single point of responsibility including the conducting of clarification meetings

**Contract manager**

Administer a package on behalf of the employer and perform duties relating to the overall management of such contract from the implementer's point of view

**Supervising agent**

Confirm that the works are proceeding in accordance with the provisions of the scope of work associated with a package and notify the contract manager of any non-conformance on the part of a contractor to requirements

**Health and safety agent**

Assume the responsibilities imposed upon the implementer as a "client" in terms of the Construction Regulations issued in terms of the Occupational Health and Safety Act, 1993, perform specific duties in terms of established procedures and lead health and safety risk management compliance processes

There are many options available to an implementer in assigning functional responsibilities to particular persons (own staff or consultant). This ensures flexibility. For example, in some programmes of projects different persons will be assigned functional responsibilities for each of the identified roles. In other programmes it may be desirable to combine functional roles and responsibilities e.g. the project leader can also be the procurement leader or the same person can be

appointed to function as project leader, lead designer, designer and cost consultant or the contract manager and supervising agent

This document can be referenced in the scope of work of professional service contracts and engineering and construction works contracts where contractors have design responsibilities for the works (see Annexure A).

# Standard scope of professional services associated with the delivery of a package

## 1 Scope

This document establishes the scope of work for professional services required to implement the procurement and delivery management system established in the Procurement and Delivery Management System for Infrastructure Projects. It establishes the standard scope of services associated with the stages of delivery identified in Table 1 in respect of the following functional roles:

- a) programme manager / project manager
- b) procurement leader
- c) project leader
- d) contract manager
- e) lead designer
- f) designer
- g) cost consultant
- h) supervising agent
- i) health and safety agent

**Table 1 – Key deliverables and activities associated with the infrastructure gateway system**

Activities	Stage (see Procurement and Delivery Management System for Infrastructure Projects for the full description of the stage)		Key deliverable
	No	Description	
Planning at a portfolio level	1	Infrastructure planning	Client approved infrastructure plan
	2	Procurement planning	Client accepted construction procurement strategy for implementing the infrastructure plan in the medium term
Planning at a package level	3	Package preparation	Client accepted strategic brief
	4	Package definition	Client accepted concept report including where necessary, a logistic support plan
Detailed design	5	Design development	Client accepted design development report
	6a	Design documentation (Production information)	Completed and client accepted production information
	6b	Design documentation (Manufacture, fabrication and construction information )	Client accepted manufacture, fabrication and construction information
Site	7	Works	Completed works which are capable of being occupied or used and accepted by the client.
	8	Hand over	Works which have been taken over by the user complete with record information
Close out	9	Package completion	Completed contract or package order

**NOTE** The Infrastructure Gateway System described in the Implementer's Procurement and Delivery Management System for Infrastructure Projects establishes the work flow and services for the delivery of infrastructure. It identifies the location of the gates, key deliverables and principal actions associated with the various stages of this system. This document establishes

general requirements for professional services and identifies the typical tasks for the execution of the stages associated with a package.

## 2 Normative references

The following referenced documents are indispensable for the application of this document. For dated references, only the edition cited applies. For undated references, the latest edition of the referenced standard (including any amendments) applies.

Construction Industry Development Board Standard for Uniformity in Construction Procurement.

New Universities Project Management Team. Procurement and Delivery Management System for Infrastructure Projects.

New Universities Project Management Team. Occupational Health and Safety Specification for Construction Works Contracts.

University of the Witwatersrand. Construction Procurement Policy, Processes, Procedures, Methods and Delegations.

SANS 10400-T, The Application of the National Building Regulations – Part T: Fire Protection

## 3 Terms and definitions

For the purposes of this document, the following terms and definitions apply:

**brief:** a working document for an identified project or package which specifies at any point in time the relevant needs, objectives, acceptance criteria and priorities of the client, provides the context of the project or package and any appropriate design or maintenance requirements within which all subsequent briefing (when needed) and designing can take place

**building:** includes

- a) any structure, whether of a temporary or permanent nature, and irrespective of the materials used in the erection thereof, erected or used in connection with
  - 1) the accommodation or convenience of human beings and animals;
  - 2) the manufacture, processing, storage, display or sale of goods;
  - 3) the rendering of a service;
  - 4) the destruction or treatment of refuse or other waste materials; and
  - 5) the cultivation or growing of plants or crops
- b) a wall, swimming bath, swimming pool, reservoir or bridge or any structure connected therewith;
- c) a fuel pump or tank used in connection therewith;
- d) any part of a building, including a building as defined in (a), (b) or (c); and
- e) any facilities or system, or portion thereof, within or outside but incidental to a building, for the provision of a water supply, drainage, sewerage, stormwater disposal, electricity supply or other similar service in respect of the building

**NOTE** This definition is the same as that contained in the National Building Regulations and Building Standards Act, 1977 (Act No. 103 of 1977)

**baseline risk assessment:** a risk assessment which results in a broad risk profile or set of risk profiles for a package or series of interrelated packages which indicates the types and size of potential sources of or exposure to anything which may cause injury or damage to persons or property which are associated with a project on a proposed site

**client:** person, organization or agent of the client who is responsible for accepting a brief for the delivery or planned maintenance of infrastructure for its own use as an end user or an agent of the end user

**commissioning:** a quality-oriented process for achieving, verifying, and documenting that the performance of facilities, systems, and assemblies meets defined objectives and criteria

**concept report:** a document which establishes the detailed brief, scope, scale, form and control budget and sets out the integrated concept for one or more packages

**construction monitoring:** the provision of independent verification consistent with the level of monitoring nominated by the employer, that the works are being completed in accordance with the requirements of the construction contract, that appropriate construction techniques are being utilised, and designs are being correctly interpreted

**contractor:** person contracted to construct, refurbish, rehabilitate, extend, alter, repair, maintain or demolish works or components thereof

**contract manager:** person responsible for administering a package on behalf of the employer and performing duties relating to the overall management of such contract from the implementer's point of view

**cost consultant:** person who provides independent and impartial estimation and control of the cost of constructing, rehabilitating and refurbishing infrastructure by means of one or more of the following:

- a) accurate measurement of the works,
- b) comprehensive knowledge of various construction systems, forms of contract and the costs of alternative design proposals, construction methods and materials, or
- c) the application of expert knowledge of costs and prices of work, labour, materials, plant and equipment required.

**contracting strategy:** strategy that governs the nature of the relationship which the employer wishes to foster with the contractor, which in turn determines the risks and responsibilities between the parties to the contract and the methodology by which the contractor is to be paid

**construction procurement strategy:** the selected packaging, contracting, pricing and targeting strategy, and procurement procedure for a particular procurement

**control budget:** the amount of money which is allocated or made available by the client to deliver or maintain infrastructure associated with a project or package including site costs, professional fees, all service and planning charges, applicable taxes, risk allowances and provision for price inflation which may be adjusted by the client from time to time

**cost plan:** the document progressively developed by estimating the total cost of the package including any construction, refurbishment, extension and professional service costs, service and planning charges and applicable taxes

**definition services:** services which develop the deliverable associated with an end of a stage

**design development report:** a document which develops in detail the approved concept to finalise the design and definition criteria, sets out the integrated developed design and contains the cost plan and schedule for one or more packages

**designer:** person who is responsible for providing design or conditional assessment services relating to the provision or maintenance of infrastructure

**employer:** person or organization intending to or entering into a contract with the contractor



**gate:** a control point at the end of a process where a decision is required before proceeding to the next process or activity

**health and safety agent:** person responsible for assuming the responsibilities imposed upon the implementer as a “client” in terms of the Construction Regulations issued in terms of the Occupational Health and Safety Act, 1993, performing specific duties in terms of established procedures and lead health and safety risk management compliance processes

**independent project:** a single package or series of packages involving the delivery and / or maintenance of infrastructure identified in a construction procurement strategy which do not form part of a programme or projects

**infrastructure:** fixed assets that are constructed or result from construction operations including:

- a) buildings, structures and facilities;
- b) water supply, sanitation, electricity supply, transportation and storm water drainage systems; and
- c) the related permanent fixtures that cannot be readily or economically removed or reused

**infrastructure plan:** a plan which identifies long term needs and links prioritised needs to a forecasted budget for the next few years

**implementer:** person or organisation responsible for the physical delivery of infrastructure or scheduled maintenance projects

**lead designer:** person who is responsible for establishing and refining the design approach or solution so that the design or solution achieves the required quality, health and safety and other required standards and is co-ordinated within the project team

**logistic support plan:** a plan which establishes the organisational structure required for operation and maintenance of the asset resulting from the package over life span, and office, stores, furniture, equipment, ICT and staff training requirements to run operation and maintenance facilities as well as engineering infrastructure

**maintenance:** the combination of all technical and associated administrative actions during an item's service life to retain it in a state in which it can perform its required functions

**manufacture, fabrication and construction information:** information produced by or on behalf of the contractor, based on the production information provided for a package which enables manufacture, fabrication or construction to take place

**package:** works which have been grouped together for delivery under a single contract or a package order

**package execution plan (PEP):** a summary of the accepted package information at each gate as such information is progressively developed and the persons identified to assume functional responsibility for taking aspects of the project forward

**package information:** information at a point in time, following the identification of a package which is contained in one or more of the following documents:

- a) the brief which is progressively developed from time to time;
- b) the design documentation including specifications, data schedules and drawings;
- c) the schedule which identifies key dates and time periods for the performance of the works and services associated with the package, and

d) cost plan

**package order:** the instruction to carry out construction works under a framework agreement

**packaging strategy:** organization of work packages into contracts

**person:** a natural or juristic person

**portfolio:** a collection of projects or programmes and other work that are grouped together to facilitate effective management of that work to meet strategic objectives

**NOTE** The projects or programmes of the portfolio may not necessarily be interdependent or directly related

**pricing strategy:** strategy which is adopted to secure financial offers and to remunerate contractors in terms of the contract

**procurement:** process which creates, manages and fulfils contracts relating to the provision of goods, services and engineering and construction works or disposals, or any combination thereof

**procurement leader:** person who is responsible for overseeing the development of the procurement documents and managing the procurement process from the advertisement of tenders to the award of the contract as a single point of responsibility including the conducting of clarification meetings

**procurement strategy:** selected packaging, contracting, pricing and targeting strategy, and procurement procedure for a particular procurement

**procurement procedure:** selected procedure for a specific procurement

**production information:** the detailing, performance definition, specification, sizing and positioning of all systems and components enabling either construction (where the contractor is able to build directly from the information prepared) or the production of manufacturing and installation information for construction

**professional service provider:** persons whose primary business is to provide impartial and independent knowledge-based services to clients for a fee

**programme:** a group of related projects managed in a coordinated way to obtain benefits and control not available from managing them individually.

**NOTE** Programmes include an element of on-going work and may include elements of related work outside the scope of discrete projects in the programme

**programme of projects:** a group packages identified in a construction procurement strategy managed in a coordinated way to obtain benefits and control not available from managing them individually

**programme manager:** person responsible for managing the implementation of a programme of projects involving the delivery and / or maintenance of infrastructure in a manner that

a) enables both the implementer and its client to achieve their objectives; and

b) all projects are developed and managed in terms of a common procedural and programmatic approach and integrated with the implementer's administrative processes and are institutionalised

**project:** identified elements of work involving the construction, refurbishment, rehabilitation, extension, alteration, demolition or preventative, corrective, scheduled or routine maintenance of infrastructure, the transfer of infrastructure to another institution or the leasing of infrastructure

**project manager:** person responsible for managing the implementation of an independent project involving the delivery and / or maintenance of infrastructure in a manner that

- c) enables both the implementer and its client to achieve their objectives; and
- d) all projects are developed and managed in terms of a common procedural and programmatic approach and integrated with the implementer's administrative processes and are institutionalised

**project leader:** person who has a non-design role to lead and direct the project team and whose basic responsibilities with respect of a stage for which services are required include:

- a) the establishment of the overall strategy for the development and delivery of the deliverable;
- b) the monitoring and integration of the activities of the project team;
- c) the development and maintenance of a schedule and the monitoring of progress towards the attainment of the deliverable; and
- d) the briefing of, the reporting to and the obtaining of decisions and acceptance of a deliverable from the client

**record information:** information that:

- a) records the condition of the completed works associated with a package;
- b) documents the works as constructed or completed;
- c) contains advice on the care and servicing requirements for the works or a portion thereof;
- d) contains advice on the use of plant and equipment;
- e) confirms the performance requirements of the design development report and production information;
- f) contains certificates confirming compliance with legislation, statutory permissions etc.; or
- g) contains guarantees that extend beyond the defects liability period provided for in the package

**NOTE** Record information includes drawings, specifications, design and service life parameters and maintenance and operation manuals

**review services:** services which review the definition service of a stage undertaken by others for general conformity with the scope of work selected for a particular contracting strategy

**risk:** effect of uncertainty on objectives

**risk assessment:** the process of risk identification, risk analysis and risk evaluation

**risk report:** report intended to inform particular internal or external stakeholders by providing information regarding the current state of risks and its management

**scope of work:** document that specifies and describes the goods, services, or engineering and construction works which are to be provided, and any other requirements and constraints relating to the manner in which the contract work is to be performed

**schedule:**

- a) the planned dates for performing activities and the planned dates for achieving major milestone; or

- b) a table of items of information

**specification:** document that prescribes requirements to be fulfilled by a product, process or service

**stage:** a collection of logically related activities in the infrastructure delivery cycle that culminates in the completion of a major deliverable

**statutory permissions:** any relevant approval, consent or permission under any legislation required to implement a package

**strategic brief:** a document defining project objectives, needs, acceptance criteria and client priorities and aspirations and setting out the basis for the development of the concept definition for one or more packages

**NOTE** The strategic brief is the client's specification of requirements for a project. It confirms key requirements and constraints.

**supervising agent:** person appointed by the employer to confirm that the works are proceeding in accordance with the provisions of the contract and to notify the contract manager of any non-conformance on the part of a contractor to requirements

**targeting strategy:** strategy that enables secondary procurement policy objectives to be promoted

**user requirements:** statement of need to be fulfilled

**utility:** a company, municipality or municipal entity which provides services such as water or electricity

**works:** all temporary works of every kind required on site for the execution and completion of the temporary works, the permanent works and the remedying of any defects

## **4 General requirements**

### **4.1** Persons providing services shall:

- a) observe all relevant statutes, by-laws and associated regulations, standards of professional conduct and industry norms established in relevant South African national standards published in terms of the Standards Act of 2008 or standards recommended by relevant professional associations;
- b) do so using the skill and care normally used by professionals providing services similar to the required services; and
- c) do so in accordance with the relevant provisions of the Procurement and Delivery Management System for Infrastructure Projects.

**4.2** Persons providing services relating to the performance of the functional role shall do so in accordance with the relevant provisions of 5, 6, 7, 8, 9 or 10.

## **5 Services provided by the programme manager / project manager**

Programme managers / project managers shall as required:

- a) manage the planning and implementation of packages in a manner that enables both the implementer and its clients to achieve their objectives and in such a manner that:
  - 1) all projects are developed and managed in terms of a common procedural approach and integrated with the implementer's administrative processes and are institutionalised;
  - 2) the various elements of the projects are properly co-ordinated;

- 3) the projects include all the work required, and only the work required, to complete the project successfully;
  - 4) the timely completion of the projects is facilitated;
  - 5) projects are completed as far as is reasonably possible, within the control budget that is agreed from time to time;
  - 6) the project satisfies the needs for which it was undertaken;
  - 7) effective use of the people involved with projects is made;
  - 8) timely and appropriate generation, collection, dissemination, storage, and ultimate disposition of project and package information occurs; and
  - 9) the systematic identification, analysis, and response to project risk occurs.
- b) prepare a construction procurement strategy to deliver the projects and update such a strategy when necessary;
  - c) develop and regularly update Infrastructure Programme / Project Implementation Plans (IPIPs) for all projects for which they are responsible for and issue the client with copies of each revision;
  - d) prepare a procurement plan for all proposed tenders for each financial year which contains the following information in a tabular form, where the proposed procurement is estimated to exceed the limit for quotations:
    - 1) a description of the goods, services or works;
    - 2) the estimated value of such goods, services or works including all applicable taxes;
    - 3) the envisaged date of advertisement;
    - 4) envisaged closing date for tenders; and
    - 5) envisaged date of award;
  - e) make the necessary arrangements for the establishment of a Documentation Review Team and the Evaluation Panel for each procurement
  - f) assign, as required, functional responsibilities to suitable professionals for taking packages beyond stage 3;
  - g) assist the implementer in the procurement of the necessary and appropriate consultants to perform functional responsibilities;
  - h) act as the employer's agent in all professional service contracts with consultants;
  - i) manage the assigned project leaders, procurement leaders and contract managers;
  - j) interface as necessary with and facilitate the client's inputs into the development and finalisation of end of stage deliverables and the acceptance thereof;
  - k) obtain the client's requirements for commissioning and handover, if any, and communicate them to those responsible for compiling procurement documents and the contract managers;
  - l) implement any requirements regarding social facilitation and establish the necessary project steering committees, appoint the community liaison officers, recruit and select local labour,

manage community related risks, deal with issues related to labour unrest or disputes during the execution of the works, etc;

- m) brief the contract manager of the client's monitoring and reporting requirements for stage 7 (Works);
- n) communicate to the client the contractual provisions for the taking over of the works and make the necessary hand over arrangements;
- o) establish requirements for close out reports, communicate such requirements to contract managers and receive reports;
- p) receive Prohibition Notices issued by the health and safety agent; and
- q) establish and maintain risk registers at a programme of projects or an independent project level and issue risk reports to the implementer.

## **6 Services provided by the procurement leader**

The procurement leader shall:

- a) manage the development of the procurement documents and the procurement process from the advertisement of tenders to the award of the contract as a single point of responsibility including the conducting of clarification meetings in accordance with the provisions of the CIDB Standard for Uniformity in Construction Procurement and the Construction Procurement Policy, Processes, Procedures, Methods and Delegations;
- b) develop a procurement programme and co-ordinate and monitor the preparation of procurement documentation;
- c) notify the health and safety agent of the award of a contract to a consultant who provides construction related services for a package and each principal contractor appointed to execute a package; and
- d) provide those responsible for developing procurement documents with the relevant templates.

## **7 Services provided by the project leader, lead designer, designer and cost consultant**

### **7.1 General**

**7.1.1** Professional services associated with the roles of project leader, lead designer, designer and cost consultant shall as necessary be provided in support of the activities identified for stages 3 to 9 in the Infrastructure Delivery Management System in accordance with the requirements of 7.3.

**NOTE** Professional services are required as inputs into most of the activities associated with a stage in order to produce a deliverable. Such services can be provided by suitably qualified employees, contracted individuals or professional service providers appointed by either the client or a contractor.

**7.1.2** Persons providing services shall as necessary:

- a) plan, design and review the works, installation or system, as relevant, taking into account pragmatic elements such as cost, construction limitations and technology and adjust their designs where the cost of the package exceeds the control budget, unless the client agrees to an increase in the control budget;
- b) develop the deliverables associated with the end of a stage in sufficient detail so that it can be used to form the basis of the scope of work for taking the package forward in terms of the selected contracting strategy as shown in Table 2;

- c) maintain in full force and effect all relevant consents and approvals and implement all required actions;
- d) provide advice relating to the works or portions thereof for which they are responsible for during the evaluation of tender offers;
- e) provide the necessary inputs into the client's occupational health and safety specification for incorporation into the scope of works associated with a construction works contract; and
- f) provide copies of all certifications associated with the provision of services relating to the project required in terms of legislation.

**Table 2 – Key deliverables associated with the scope of work of a contracting strategy**

Contracting strategy		Key deliverable which forms the basis of the scope of work associated with a contract	
Strategy	Description	Stage associated with the deliverable	Deliverable
Management contractor*	Contract under which a contractor provides consultation during the design stage and is responsible for planning and managing all post-contract activities and for the performance of the whole of the contract	3 Package preparation	Client accepted strategic brief*
Design and construct	Contract in which a contractor designs a project based on a brief provided by the client and constructs it	4 Package definition	Client accepted concept report
Develop and construct	Contract based on a scheme design prepared by the client under which a contractor produces drawings and constructs it	5 Design development	Client accepted design development report
Design by employer	Contract under which a contractor undertakes only construction on the basis of full designs issued by the employer	6a Design documentation (Production information)	Completed and client accepted production information

\* A management contractor can also be appointed after Stage 4, 5 or 6A in which case the client accepted concept report, design development report or production information, respectively, can serve as the basis of the scope of work.

**NOTE** The client can in respect of a package, separately appoint a project leader, a lead designer, designers and a cost consultant. Alternatively, the client may appoint a person to perform more than one role or all the roles. Where works involve a single discipline, e.g. civil engineering works, a single person is usually appointed to perform all the roles.

**7.1.3** Where the client appoints a designer to perform a discipline specific service (e.g. according to those described in Table 3 for building works), the designer, shall provide the service in relation to the identified discipline, subject to the person appointed as the designer for architectural design services relating to a building ensuring that the planning and design of buildings, spaces and structures and associated site works:

- a) is properly co-ordinated between the different design disciplines as relevant; and
- b) satisfies the relevant prescriptive and functional requirements of the National Building Regulations published in terms of the National Building Regulations and Standards Act of 1977 (Act 103 of 1977) in relation to structural design, dimensions, public safety, site operations, excavations, foundations, floors, walls, roofs, stairways, glazing, lighting and ventilation, drainage, non-water-borne means of sanitary disposal, stormwater disposal, facilities for disabled persons, fire protection, space heating, fire installation and energy usage.

**NOTE** Regulation A2(1)(g) of the National Building Regulations requires that the plans and particulars that are submitted to the local authority include a declaration by a person registered in a professional category of registration in terms of the one of the councils for the professions identified in the Council for the Built Environment Act, 2000 as to how the applicable functional regulations shall be satisfied. 7.1.3b) is aligned with this requirement.

**7.1.4** The responsibilities for definition services (i.e. develop the deliverable associated with a stage) and review services (i.e. confirm that the deliverable satisfies the package information) for each stage

in terms of different contracting strategies are as stated in Table 4.

**Table 3 – Design services relating to buildings**

Service	Principal activities
Architectural design	Plan, design and review the construction, extension or refurbishment of buildings, spaces, structures and associated site works for the use of people by the creative organization of materials and components with consideration to mass, space, form, volume, texture, structure, light, shadow, materials and the project brief.
Civil engineering	Plan, design and review the construction of site works comprising a structure such as a road, pipeline or sewerage system or the results of operations such as earthworks or geotechnical processes.
Electrical engineering	Plan, design and review the installation of the electrical and electronic systems for and in a building or structure
Fire safety	Plan, design and review the fire protection system to protect people and their environments from the destructive effects of fire and smoke.
Landscape architectural design	Plan, design and review the construction of outdoor and public spaces to achieve environmental, socio-behavioural, or aesthetic outcomes or any combination thereof
Mechanical engineering	Plan, design and review the construction, as relevant, of the gas installation, compressed air installations, thermal and environmental control systems, materials handling systems or mechanical equipment for and in a building
Structural engineering	Plan, design and review the construction of buildings and structures or any component thereof to ensure structural safety and structural serviceability performance during their working life in the environment in which they are located when subject to their intended use in terms of one or more of the following: i) external and internal environmental agents; ii) maintenance schedule and specified component design life; or iii) changes in form or properties
Wet services	Plan, design and review the construction, within buildings or from a point of drainage installations intended for the reception, conveyance, storage or treatment of sewage, water installations which conveys water for the purpose of fire-fighting or consumption and roof drainage arrangements within a building.

**Table 4– Allocation of responsibilities for services in the different contracting strategies**

Contracting strategy (see Table 3)	Stage (See Table 1)	Client's responsibilities	Contractor's responsibilities
Management contractor*	4, 5 and 6A	Review services	Definition services
Design and construct	4	Definition services	None
	5 and 6A	Review services	Definition services
Develop and construct	4 and 5	Definition services	None
	6A	Review services	Definition services
Design by employer	4, 5 and 6A	Definition services	None

\* A management contractor can also be appointed after Stage 4, 5 or 6A, in which case, the management contractor will assume the responsibilities for the contractor associated with that stage.

**7.1.5** Persons providing services shall establish the need for specialist advice, studies, tests and surveys relevant to design input, including the necessity of appointing a specialist to design a component of the fire protection component of buildings described in Table 5 and advise the client accordingly. They shall thereafter, as necessary, brief the specialist, co-ordinate the advice, studies, tests and surveys, advise the client on payments due, collate outputs of specialist study surveys, advise on implications of findings, report to the client and obtain further instructions.

**7.1.6** Persons providing services in the later stages of stage 5 during stage 6A, relating to buildings shall prepare documentation as soon as possible which is sufficient for local authority approval in terms of the National Building Regulations and Standards Act of 1977.



**Table 5 – Specialist fire design services**

Description of design services
Design, install and maintain automatic sprinkler system in accordance with the requirements of SANS 10400-T
Design and install a lightening protection system in accordance with the requirements of SANS 10400-T
Design, install, test and maintain the pressurization of emergency routes and components in accordance with the requirements of SANS 10400-T
Design, install and maintain a fire detection and alarm system in accordance with the requirements of SANS 10400-T
Design, install and maintain a fixed automatic fire-fighting system that is in accordance with the requirements of SANS 10400-T
Perform a rational assessment of building materials and components to determine their fire resistance in accordance with the requirements of SANS 10400-T.

**NOTE** Some of the specialist fire design services can be undertaken by specialist subcontractors of the contractor

**7.1.7** The project leader shall:

- a) until such time that a contractor is appointed to implement the package, promptly update the package execution plan or provide the information to the programme manager / project manager whenever a stage is completed;
- b) maintain a risk register for each package for which they are responsible for; and
- c) oversee the development of a maintenance plan if required.

**NOTE** A contract manager is only appointed when a package is awarded. This can take place between the end of stage 3 (package planning) and when most of the production information (design documentation) is completed, depending upon the contracting strategy that is adopted. The role of the project leader also diminishes where the contractor takes on management and design responsibilities.

**7.1.8** Designers shall, when called upon to do so:

- a) engage with the health and safety agent; and
- b) provide inputs into procurement documents to enable the scope of work and other documents to be finalised.

**7.1.9** Designers shall promptly notify the health and safety agent of any significant changes to the design that are made after the acceptance of the design development report and take into account any advice provided by the health and safety agent in effecting such changes.

## **7.2 Drawings**

**7.2.1** Those providing services shall:

- a) maintain a register of all drawings and other production information issued for construction purposes.
- b) provide record drawings indicating all deviations from the construction drawings.

**7.2.2** The drawings shall, unless otherwise specified, clearly indicate the following:

- a) the project title;
- b) the drawing title;
- c) the drawing number and date;
- d) the revision number and date; and

e) the drawing status i.e. for acceptance, for construction or for fabrication/manufacture.

**7.2.3** The structural drawings shall contain the following information:

- a) the design standards;
- b) the loads which the structure is designed to withstand;
- c) the key geotechnical parameters used in the design;
- d) the basic engineering properties of the construction materials; and
- e) the construction standards.

## **7.3 Services provided by the project leader, lead designer, designer and cost consultant**

### **7.3.1 Stage 3 (Package preparation) services**

The project leader, lead designer, designer and cost consultant shall provide as necessary, the services set out in Table 6, to develop the end of stage deliverable in accordance with the relevant provisions of the Standard for an Infrastructure Delivery Management System.

### **7.3.2 Stage 4 (Package definition) services**

**7.3.2.1** The project leader, lead designer, designer and cost consultant shall provide, as necessary, the services set out in Table 7 to develop the end of stage deliverable in accordance with the relevant provisions of the Standard for an Infrastructure Delivery Management System.

**7.3.2.2** Where others develop the concept report (e.g. in terms of a management contractor contracting strategy), professionals appointed by the client shall review the concept report for general conformity with the scope of work in their respective areas of expertise.

### **7.3.3 Stage 5 (Design development) services**

**7.3.3.1** The project leader, lead designer, designer and cost consultant shall provide, as necessary, the services set out in Table 8 to develop the end of stage deliverable in accordance with the relevant provisions of the Standard for an Infrastructure Delivery Management System.

**7.3.3.2** Where others develop the concept report (e.g. in terms of a management contractor or design and construct contracting strategy), professionals appointed by the client shall review the concept report for general conformity with the scope of work in their respective areas of expertise.

**7.3.3.3** Designers shall sign the declaration contained in Annexure B before the conclusion of the design development stage. The Project Leader shall ensure that this declaration is attached to the design development report.

### **7.3.4 Stage 6 (Design documentation) services**

**7.3.4.1** The project leader, lead designer, designer and cost consultant shall provide, as necessary, the services set out in Table 9 and 10 to develop the end of stage deliverable in accordance with the relevant provisions of the Standard for an Infrastructure Delivery Management System.

**7.3.4.2** Provide as necessary the services associated with the development of the logistic support plan.

**Table 6 – Stage 3 (Package preparation) services**

<b>Project leader</b>	<b>Lead designer</b>	<b>Designer and cost consultant</b>	<b>Health and safety agent</b>
<p>1) Establish the need for specialist advice and studies and procure or facilitate the procurement of such advice and studies.</p> <p>2) Assist the client with the procurement of the services of suitable qualified persons to provide discipline specific services.</p> <p>3) Obtain outline statement from the client setting out the client's requirements and objectives including cost and schedule for the package.</p> <p>4) Prepare, co-ordinate and monitor a project initiation programme</p> <p>5) Identify and document constraints to the development of design proposals or solutions.</p> <p>6) Identify stakeholders and facilitate the necessary consultations in consultation with the client.</p> <p>7) Facilitate the development and finalization of the strategic brief.</p> <p>8) Document findings, assumptions and recommendations on studies and work undertaken in developing the strategic brief in a brief report.</p> <p>9) Obtain the client's acceptance of the strategic brief.</p>	<p>In addition to providing services as set out for the designer, co-ordinate the advice and input of designers and cost consultants</p>	<p>1) Provide discipline specific advice, data or input into the need for specialist advice and studies, liaison with stakeholders and the development of the strategic brief.</p> <p>2) Carry out, where instructed by the project leader, discipline specific preliminary studies and information gathering to assist in establishing the strategic brief.</p> <p>3) Advise on the need for surveys, analyses, tests or investigations which will be required in stage 4 to refine the production information and assumptions made during stage 3 and the availability and location of related infrastructure and services.</p> <p>4) Collaborate and assist with the preparation and finalisation of the strategic brief.</p>	<p>1) Provide health and safety input into strategic brief as necessary</p> <p>2) Advise on health and safety matters, regulations or guidelines with which the project must comply and comment on implications for the project</p>

**Table 7 – Stage 4 (Package definition) services**

Project leader	Lead designer	Designer	Cost consultant	Health and safety agent
<p>1) Assist the client with the procurement of the services of suitable qualified persons to provide discipline specific services.</p> <p>2) Brief the client and the project team on procedures to complete stage 4 and to meet project objectives.</p> <p>3) Initiate, obtain agreement and direct implementation of management and reporting procedures for stage 4.</p> <p>4) Obtain instructions from client on allocation of design responsibilities within project team.</p> <p>5) Receive advice on constraints that may affect the accepted strategic brief, obtain instructions on how the client wishes to proceed and incorporate any agreed amendments and adjustments in the concept report or revised construction procurement strategy.</p> <p>6) Prepare and co-ordinate an indicative project documentation and delivery programme</p> <p>7) Receive and consider inputs from the project team and take any necessary actions.</p> <p>8) Facilitate the development and finalization of the concept report including the obtaining of any approvals or in principle acceptances of elements within the concept report.</p> <p>9) Obtain the client's acceptance of the concept report.</p>	<p>In addition to providing services as set out for the designer:</p> <p>1) Establish the design approach or solution so that the design or solution achieves the required quality, health and safety and other required standards and is co-ordinated within the project team.</p> <p>2) Advise on allocation of responsibilities within the project team and resolve potential ambiguities.</p> <p>3) Co-ordinate:</p> <p>a) the designers' and cost consultant's activities, inputs and outputs.</p> <p>b) the establishment of the primary design, rehabilitation or maintenance criteria including durability, projected maintenance, design or service life and environmental policy.</p> <p>c) the carrying out of specialist studies and surveys relevant to design input or solutions.</p> <p>d) the periodic reviews of the development of the design concept or solution for conformity with the strategic brief and the control budget.</p> <p>e) the scope of consultations with statutory authorities, funders and utilities.</p> <p>4) Give design direction to the preparation of design options or solutions and inputs into the concept report and the establishment of preferred design option or solution.</p>	<p>1) Implement the established management and reporting procedures to complete the concept report in response to the strategic brief.</p> <p>2) Visit the site, carry out initial appraisal and advise on physical restrictions that might affect the package information and the control budget.</p> <p>3) Collaborate with the project team and provide discipline specific advice, data or input into the need for specialist advice and studies, liaison with stakeholders, consultations with and documents required by statutory bodies, funders and utility providers and the development and finalisation of the concept report.</p> <p>4) Collaborate with the health and safety agent in the development of the site health and safety specification and take account of such specification in their design proposals.</p> <p>5) Advise on further surveys, analyses, tests and investigations which may be required and advise on payments due to specialists for specialist investigations, tests and studies.</p> <p>5) Establish regulatory authority's requirements and incorporate into the design.</p> <p>6) Develop the design or maintenance approach with the project team so that the design achieves the required quality, health and safety and environmental standards, satisfies all regulatory requirements and consents and is integrated within the project team and with the requirements of utility providers and interfaces with related projects of existing infrastructure.</p> <p>7) Advise and comment on matters, regulations or guidelines with which the project must comply and comment on implications on package information.</p> <p>8) Establish design options or solutions and motivate preferred options or solutions.</p> <p>9) Provide information for or establish cost and life cycle cost estimates of components or elements of the package.</p> <p>10) Establish access, utilities, services and connections required for the design.</p> <p>11) Prepare preliminary or process design information or repair and maintenance information in the form of sketches, design notes, drawings or any combination thereof and outline performance specifications sufficient to describe the scope, scale, form and character of works for concept report and to develop a realistic cost plan; and</p> <p>12) Assemble concept design information and narrative describing developed brief and evolving design or maintenance intent for inclusion in concept report.</p>	<p>5) Provide cost advice to support the development of design approach or solutions so that the selected design or solution achieves the required quality and health and safety standards within the control budget.</p> <p>6) Receive details of options and preliminary design information or solutions and prepare cost plan for the concept report based on preliminary and elemental or equivalent cost estimates.</p> <p>7) Advise on the effect of market conditions on cost plan.</p> <p>8) Assemble the cost plan and related reports for inclusion in the concept report and motivate or propose cost reduction measures where the cost plan exceeds the control budget.</p>	<p>1) Prepare a baseline risk assessment for the package</p> <p>2) Review and evaluate design concepts and advise on health and safety impacts on the delivery and maintenance of the proposed package</p> <p>3) Advise designers of their health and safety legal liabilities and responsibilities for constructability, maintainability and operability of structures</p> <p>4) Comment on health and safety matters affecting design options</p> <p>5) Prepare and finalise a suitable, sufficiently documented and coherent site health and safety specification</p> <p>6) Prepare health and safety information for the concept report</p>

**Table 8 – Stage 5 (Design development) services**

Project leader	Lead designer	Designer	Cost consultant	Health and safety agent
<ol style="list-style-type: none"> <li>1) Direct               <ol style="list-style-type: none"> <li>a) project team considerations and investigations of alternative design solutions that comply with the package information.</li> <li>b) risk management process, allocate to project team risk mitigation actions, and assess impact on package information.</li> <li>c) value management process, allocate to project team proposals for value management, and assess impact on package information.</li> <li>d) receive reports/proposals and obtain instructions from client.</li> </ol> </li> <li>2) Prepare and co-ordinate a detailed design and documentation programme, based on the indicative programme for delivery</li> <li>3) Monitor the cost control measures put in place by the cost consultant to verify that the progressive design compliance with the control budget including design reviews to achieve budget compliance</li> <li>4) Monitor               <ol style="list-style-type: none"> <li>a) progress of consultations with utility providers.</li> <li>b) finalization of design criteria.</li> <li>c) provision of principal elements to assist in establishing cost plan.</li> </ol> </li> <li>5) Refine, obtain agreement and direct implementation of management procedures and reporting procedures.</li> <li>6) Receive inputs from project team, assess impact on package information and, as necessary, submit to client and obtain instructions or agreement.</li> <li>7) Manage and monitor liaison and consultations with statutory authorities to agree submission requirements, report to client and arrange payment of fees.</li> <li>8) Prepare and assemble design development report and submit to client for acceptance.</li> </ol>	<ol style="list-style-type: none"> <li>1) Refine design approach so that the design achieves the required quality, is co-ordinated within the project team and is in conformity with package information.</li> <li>2) Co-ordinate work of discipline specific design consultants and cost consultant.</li> <li>3) Give design direction to consideration of design options.</li> <li>4) Give design direction and co-ordinate               <ol style="list-style-type: none"> <li>a) provision of briefing information to specialists, and suppliers.</li> <li>b) integration of the design and requirements of project team.</li> <li>c) integration of the design and requirements of specialists and suppliers.</li> </ol> </li> <li>5) Lead and co-ordinate liaison and consultations with statutory authorities to agree submission requirements.</li> </ol>	<ol style="list-style-type: none"> <li>1) Advise on updating design schedule.</li> <li>2) As the design develops, review compliance with client and authorities' requirements and advise on any implications.</li> <li>3) Collaborate and assist in preparing the design development report.</li> <li>4) Collaborate with the health and safety agent in the implementation of the site health and safety specification</li> <li>5) Receive and with project team discuss client comments on or amendments to design development report, advise on impact of any amendments or additional requirements and changes.</li> <li>6) With project team, develop design approach and periodically review so that the design achieves required quality, is co-ordinated and is in conformity with package information.</li> <li>7) Prepare design options for elements of works and test options with project team against package information and agree preferred option.</li> <li>8) Develop strategy for use, cleaning, maintenance and subsequent deconstruction.</li> <li>9) Advise where elements of works are most appropriately designed (wholly or in part) by specialists/suppliers, provide briefing information.</li> <li>10) Receive and advise on outputs of specialist studies and surveys and incorporate into the design.</li> <li>11) Liaise with utility providers as necessary and incorporate into the design their requirements.</li> <li>12) Prepare calculations in sufficient detail to facilitate and verify design development.</li> <li>13) Finalise design criteria for works.</li> <li>14) Develop actions for risk mitigation and assess with project team impact on package information.</li> <li>15) Contribute to value management process and assess impact on package information.</li> </ol>	<ol style="list-style-type: none"> <li>6) Provide cost advice for development of design approach so that the design achieves required quality, is co-ordinated within project team and in conformity with package information.</li> <li>7) Contribute to periodic reviews of development of the design for conformity with project team, assess need for changes, advise on impact on package information and incorporate agreed changes.</li> <li>8) Update cost plan and advise on budget.</li> <li>9) Prepare cash flow forecasts and monitor expenditure against cost plan and report.</li> <li>10) Advise on effect of market conditions including forecast of construction cost.</li> <li>11) Prepare cost studies to assist project team in testing options.</li> <li>12) Consider cost aspect of strategy for use, cleaning and maintenance and subsequent construction.</li> <li>13) Receive and advise on outputs of specialist studies and surveys and incorporate into the cost plan.</li> <li>14) Provide cost information for liaison with utility providers.</li> <li>15) Support development of actions for risk mitigation and assess impact on package information with project team.</li> <li>16) Contribute to value management process and assess impact on package information with the project team.</li> </ol>	<ol style="list-style-type: none"> <li>1) Issue the site health and safety specification to the project leader, lead designer, designer, procurement leader, cost consultant, contract manager, supervising agent and contract, as relevant and appropriate</li> <li>2) Provide health and safety briefing to designers and cost consultant</li> <li>3) Advise on health and safety impact of compliance with regulations</li> <li>4) Collaborate in finalising implications of health and safety requirements on the design</li> <li>5) Receive and review designer's design proposals for general conformance with relevant health and safety regulations</li> <li>6) Support designer's integration of health and safety requirements into the design development report</li> <li>7) Review design development report before it is finalised for compliance with the requirements of the site health and safety specification</li> </ol>

**Table 8 (concluded)**

Project leader	Lead designer	Designer	Cost consultant	Health and safety agent
<p>9) Obtain client comments on or amendments to design development report, discuss with project team, advise on impact of any amendments or additional requirements, agree changes and resubmit design development report to the client for acceptance.</p> <p>10) Manage and monitor the timeous submission by the designers of documentation to obtain the necessary approvals</p> <p>11) Obtain statutory permissions that are required</p> <p>12) Obtain the client's acceptance of the design development report.</p>		<p>16) Provide information on principal elements to assist in establishing cost plan.</p> <p>17) Establish critical construction details, tolerances, performance tolerances and anticipated movements, defining critical co-ordination clearances.</p> <p>18) Advise on scope of performance and prescriptive specifications, and procurement implications.</p> <p>19) Liaise with project team and contribute to consultations with statutory authorities to agree submission requirements.</p> <p>20) Prepare design development drawings defining detailed form, function and character of works with the primary components being defined in terms of overall size and typical detail, including general arrangement plans, sections, elevations and details in sufficient detail to show design intent.</p> <p>21) Prepare outline specifications for components of works defining performance and quality.</p> <p>22) Assemble design development drawings, outline specifications and agreed visualizations for inclusion in design development report.</p>	<p>17) Receive information on principal elements to establish approximate quantities.</p> <p>18) Receive details of design development and prepare cost details for inclusion in the design development report.</p> <p>19) Assemble cost plan and reports for inclusion in design development report.</p>	

**Table 9 – Stage 6A (Production information) services**

Project leader	Lead designer	Designer	Cost consultant	Health and safety agent
<p>1) Refine or initiate, obtain agreement and direct implementation of refined management procedures and reporting procedures.</p> <p>2) Receive:</p> <p>a) project team advice on scope, content, assembly, packaging and sequencing of production information, and updating of design schedule and report to client and obtain instructions.</p> <p>b) results of periodic review of the development of the design for conformity with package information and advise on need for change, advise on impact, submit to client and obtain instructions.</p> <p>3) Monitor and manage development of production information in conformity with package information.</p> <p>4) Direct work of project team, allocate actions, assess impact on package information, report to client and obtain instructions.</p> <p>5) Contribute to strategy for construction, use, cleaning and subsequent maintenance, and report to client and obtain agreement.</p> <p>6) Manage and monitor project team liaison and submissions to statutory authorities and report to client.</p> <p>7) Receive production information drawings and schedules of work sufficient for construction and assemble works information and undertake package review.</p> <p>8) Obtain any outstanding statutory permissions</p>	<p>1) Co-ordinate work of discipline specific design consultants and cost consultant.</p> <p>2) Co-ordinate advice on scope, content, assembly, packaging and sequencing of production information and implementation of clients instructions.</p> <p>3) Give direction to development of production information in conformity with package information.</p> <p>4) Give design direction and co-ordinate integration of the design requirements of project team and specialist and suppliers into package information.</p> <p>5) Lead and co-ordinate project team liaison and making of submissions to statutory authorities.</p>	<p>1) Advise on scope, content, assembly, packaging and sequencing of production information and implement instructions.</p> <p>2) Advise on updating design schedule.</p> <p>3) Take into account the requirements of the site health and safety specification</p> <p>4) Collaborate with the health and safety agent in the implementation of the site health and safety specification</p> <p>5) Prepare a report which satisfies the provisions of Regulation 6(1)(c) of the Construction Regulations 2014</p> <p>6) Develop production information in conformity with package information.</p> <p>7) Periodically review development of the design for conformity with package information, assess with project team need for changes and advise on impact on package information.</p> <p>8) Incorporate non-material changes to the design.</p> <p>9) Confirm strategy for construction, use, cleaning and subsequent maintenance.</p> <p>10) Develop actions for risk mitigation and assess with project team impact on package information.</p> <p>11) Contribute to value management process, develop proposals for value management and assess with project team impact on package information.</p> <p>12) Integrate the design and requirements of project team into package information.</p> <p>13) Integrate the design and requirements of specialists and suppliers into package information.</p> <p>14) Prepare drawings and integrate information from specialists and suppliers.</p> <p>15) Liaise with project team and contribute to submissions to statutory authorities.</p> <p>16) Prepare production information drawings and schedules of works sufficient for construction or preparation of manufacturing and installation drawings and production information by other project team members.</p> <p>17) Receive confirmation of setting out information and dimension drawings.</p> <p>18) Prepare detailed specifications for components of works for inclusion in scope of work, defining performance, quality, operating and maintenance requirements.</p> <p>19) Incorporate appropriate facilities for commissioning within the system design.</p>	<p>4) Support development of production information in conformity with the package information.</p> <p>5) Contribute to the periodic review of the development of the design for conformity with package information, advise on conformity with the package information, assess with project team need for changes and advise on impact on package information.</p> <p>6) Contribute to confirmation of strategy for use, cleaning and maintenance and subsequent construction.</p> <p>7) Advise on effect of market conditions including forecast of construction cost.</p> <p>8) Support development of proposals for risk mitigation and assess with project team impact on package information.</p> <p>9) Contribute to value management process, support development of proposals for value management and assess with project team impact on package information.</p> <p>10) Review integration of the design and requirements of specialists and suppliers into package information for conformity with cost plan.</p> <p>11) Receive production information drawings and schedules of work sufficient for construction or preparation of manufacturing and installation drawings and undertake cost check exercise, monitor cost and update cash flow projections.</p>	<p>1) Identify portions of production information that need to be reviewed for compliance with the requirements of site health and safety specification and request such information from the designers, as relevant</p> <p>2) Receive and review health and safety aspects of production information for designer's compliance with health and safety duties</p> <p>3) Receive reports on health and safety from designers so that pertinent information can be included in the scope of work of the contractor's contract</p>

**Table 10 – Stage 6B (Manufacture, fabrication and construction information) services**

Design lead	Discipline specific designer	Health and safety agent
<b>Professionals appointed by client (review service)</b>		
Coordinate work of discipline specific design consultants:	<ol style="list-style-type: none"> <li>1) Advise on need for instructions relating to MF&amp;C information.</li> <li>2) Review schedule for submission of MF&amp;C information to meet needs of procurement pre-installation testing, and construction schedule.</li> <li>3) Provide information required to clarify production information drawings and specifications.</li> <li>4) Receive and review MF&amp;C information for general conformity with scope of work and consider need for amendments and resubmissions for further review and issue comments.</li> <li>5) Advise on need to amend production information or design included in scope of work and assess impact on changes on package information with project team.</li> <li>6) Advise on contractor's proposals relating to elements of the works to be designed by contractor.</li> <li>7) Receive and review samples of materials, components and assemblies for general conformity with scope of work and consider the need for amendments and resubmission for further review and issue comments.</li> <li>8) Comment on contractor's method statements in so far as they reflect on design intent of the works.</li> <li>9) Monitor progress with completion of MF&amp;C information.</li> <li>10) Review operation and maintenance manuals for components and systems, record drawings and schedules of design criteria of works as constructed, for general conformity with scope of work information and completeness.</li> <li>11) Update production information, general arrangement drawings and schedules, incorporating changes instructed during construction.</li> </ol>	<ol style="list-style-type: none"> <li>1) Receive and review health and safety of aspects of manufacture, fabrication and construction information for designer's compliance with health and safety duties</li> <li>2) Advise on need for designers to consider further health and safety aspects of the design included in production information.</li> </ol>
<b>Professional appointed by the contractor</b>		
Coordinate work of discipline specific design consultants:	<ol style="list-style-type: none"> <li>1) Consider production information and advise on issues requiring supplementary information or clarification.</li> <li>2) Advise on design schedule that meets needs of procurement, pre-installation testing, construction works contract and construction schedule.</li> <li>3) Regularly review design schedule for receipt and issue of information, submissions for approval, and testing and commissioning during construction. Issue schedule of drawings and other information to be provided.</li> <li>4) Develop actions for risk mitigation and assess impact with construction contract team/project team.</li> <li>5) Contribute to value management process. Develop proposals for value management. With Construction Contract team/project team assess impact on construction works contract.</li> <li>6) Request and obtain information required to clarify production information drawings and specifications.</li> <li>7) Prepare co-ordinated manufacture and installation drawings of elements and/or components and relevant testing and commissioning information, based on production information. Integrate with construction, manufacture and installation drawings.</li> <li>8) Periodically review development of the design for conformity with production information. With construction contract team/project team assess need for changes and advise on impact on construction works contract.</li> <li>9) Obtain reviews and approvals for MF&amp;C information. Provide, for review and approval, technical submissions detailing quality and performance of materials and equipment to demonstrate compliance with production information.</li> <li>10) Provide clarification of MF&amp;C information as required.</li> <li>11) Update drawings and schedules to reflect changes in components and installations as construction progresses.</li> <li>12) Assess impact of variations on production information and advise.</li> <li>13) Define quality control and testing procedures to demonstrate compliance with construction works contract. Receive results of performance demonstration tests, adjust MF&amp;C information as required and re-test. Obtain reviews for results of tests.</li> <li>14) Advise on need for special inspections or tests during construction.</li> <li>15) Assist with preparation of maintenance manuals for components and systems, record drawings and schedules of design criteria of works as constructed.</li> </ol>	



### 7.3.5 Stage 7 (Works), Stage 8 (Handover) and Stage 9 (Close out) services

4.3.5.1 The project leader, lead designer, designer and cost consultant shall provide, as necessary, the services set out in Table 11 to develop the end of stage deliverables in accordance with the relevant provisions of the Standard for an Infrastructure Delivery Management System.

**Table 11 – Stage 7 (Works), Stage 8 (Handover) and Stage 9 (close out) services**

Project leader	Lead designer	Designer	Cost consultant	Health and safety agent
1) Deal with any outstanding issues 2) Monitor <ul style="list-style-type: none"> <li>- review of record information and issue to client</li> <li>- liaise with project users in use of systems</li> <li>- respond to queries about use, cleaning, maintenance and subsequent operation</li> <li>- obtain outstanding statutory permissions</li> </ul> 3) Lead post-project review 4) Assemble records and archive originals and copies as appropriate	In addition to performing discipline specific Design Consultant tasks co-ordinate <ul style="list-style-type: none"> <li>- review of record information</li> <li>- liaison with project users in use of systems</li> <li>- assistance with queries about use, cleaning, maintenance and subsequent operation</li> <li>- the obtaining of any outstanding statutory permissions</li> </ul>	1) Deal with any outstanding issues 2) Contribute to post-project review 3) Assemble records and archive originals and copies as appropriate 4) Complete inputs into record information 5) Liaise with Project users in use of systems 6) Assist with queries about use, cleaning, maintenance and subsequent construction 7) Assist with obtaining of any outstanding statutory permissions		1) Monitor health and safety risks and compliance with health and safety requirements 2) Submit to authorities and facilitate permits 3) Liaise with project users of the systems 4) Assist with queries about use, cleaning, maintenance and subsequent construction

NOTE: Designers are invariably appointed to act as supervising agents to ensure that design intent is met / verify that the construction is being carried out in accordance with the design in order to fulfil requirements of the National Building Regulations and the Construction Regulations 2014.

## 7.4 Procurement services

The project leader, lead designer, designer and cost consultant shall, where required by the programme manager / project manager,

- a) develop procurement documents (calls for expressions of interest, tender documents and contracts) in accordance with the provisions of the CIDB Standard for Uniformity in Construction Procurement; and
- b) evaluate, where required by the client, calls for expressions of interest and tenders in accordance with the provisions of the CIDB Standard for Uniformity in Construction Procurement and develop evaluation reports.

## 8 Services provided by the contract manager

8.1 The contract manager shall:

- a) administer the contract in accordance with the terms of the contract that is entered into by the employer as the person identified as the contract manager in Table 12 subject to any constraints imposed by the employer;
- b) capture on the system or provide the programme manager / project manager with the following data within two weeks of the award of a package with at least the following information:
  - 1) name and contract particulars;
  - 2) the programme or project number, as relevant
  - 3) the contractual dates associated with the contract and where relevant, a task, batch or package order (see Table 12)

**Table 12: Responsibilities and basic parameters associated with a contract**

Contract	Identity of contract manager in terms of the contract	Person responsible for assessing the amount due	Assessment date	Contractual dates	Total of Prices	
					Pricing strategy	Basis for calculation
NEC3 Supply Contract (SC)	Supply Manager	Supply Manager	Monthly assessment date Final assessment (4 weeks after the last defects date)	Starting date Delivery date Defects date	Priced contract with Price Schedule	Sum of quantities times rates plus prices for items which have no quantities
NEC3 Supply Short Contract (SSC)	Purchaser's representative	Purchaser	Monthly assessment date Final assessment (4 weeks after the last defects date)	Starting date Delivery date Defects date Start date for batch* Delivery date for batch* Defects date for a batch*	Priced contract with Price Schedule	Sum of quantities times rates plus prices for items which have no quantities
NEC3 Term Service Contract	Service Manager	Service Manager	Monthly assessment date Final assessment (four weeks after the end of the service / the latest date for completion of a task )	Starting date Service period Starting date for task* Task Completion Date*	A: Priced contract with Price List	Sum of quantities times rates plus prices for items which have no quantities
					C: Target contract with Price List	Sum of quantities times rates plus prices for items which have no quantities
					F: Cost reimbursable contract	Forecast of Defined Cost
NEC3 Term Service Short Contract	Employer's representative	Contractor	Monthly assessment date Final assessment (one month after the end of the service / the latest date for completion of a task )	Starting date Service period Starting date for task* Task completion date*	Priced contract with a Price List	Sum of quantities times rates plus prices for items which have no quantities
NEC3 Professional Services Contract	Employer's representative	Consultant	Monthly assessment date Final assessment (8 weeks after the last defects date) Completion of the whole of the services or the latest date for the completion of a task	Starting date Completion date for whole of the services Sectional completion dates Defects date Starting date for task* Task completion date*	A: Priced contract with activity schedule	Sum of prices for activities in activity schedule
					C: Target contract	Sum of prices for activities
					E: Time based	Forecast of the total Time Charge
					G: Term contract	Forecast of the total Time Charge plus sum of lump sum process in Task Schedule

Contract	Identity of contract manager in terms of the contract	Person responsible for assessing the amount due	Assessment date	Contractual dates	Total of Prices	
					Pricing strategy	Basis for calculation
NEC3 Engineering and Construction Contract	Project Manager	Project Manager	Monthly assessment date Final assessment (4 weeks after issue of Defects Certificate) Completion of the whole of the services or the latest date for the completion of a task	Starting date Completion date Sectional completion dates Defects date Starting date for a package* Completion date for a package* Defects date for a package*	A: Priced contract with Activity Schedule	Sum of prices for activities in activity schedule
					B: Priced contract with Bill of quantities	Sum of quantities times rates plus prices for items which have no quantities
					C: Target contract with Activity Schedule	Sum of prices for activities in activity schedule
					E: Cost reimbursable contract	Forecast of Defined Cost
					F: Management contract	Forecast of Defined Cost
NEC3 Engineering and Construction Short Contract	Employer's delegate	Contractor	Monthly assessment date Final assessment (4 weeks after the issue of the Defects Certificate)	Starting date Completion date Defects date Starting date for a package* Completion date for a package* Defects date for a package*	Priced contract with a Price List	Sum of quantities times rates plus prices for items which have no quantities

\*Applicable where package, task or batch orders are issued in terms of a framework agreement

- 4) the assessment dates associated with the contract or task, batch or package order, as relevant (see Table 12);
  - 5) except in the case of very low value goods or services contracts, provide a cash flow forecast against each assessment date;
  - 6) the total of prices or forecasted total of prices, if not already captured or provided; and
  - 7) where relevant, whether or not provision is made for price adjustment for inflation, delay damages, company guarantee, performance bond and retention and if so, what is the quantum or estimated quantum of such provisions, where applicable;
- c) capture on the system the date when certificates of insurances, bonds and the like have been accepted in terms of the contract within one week of them being accepted;
  - d) administer such contract or task, batch or package order in accordance with the provisions of the contract and the implementer's Construction Procurement Policy, Processes, Procedures, Methods and Delegations, using the implementer's standard templates for communications;
  - e) make, where required in terms of the contract (see Table 12), an assessment of the amount due, certify payment and forward to the programme manager / project manager such certificates on or before the days in the month agreed with the programme manager / project manager;
  - f) revise the estimates for price adjustment for inflation where provided for, prepare an updated cash flow for the remainder of the contract based on the contractor's programme and capture these amounts together with the amounts due to the contractor and the retention amounts, if relevant, on a monthly basis;
  - g) capture the revised total of the prices or completion date or delivery date for the contract or batch, task or package order within one week of a contractor revising a forecast of the total of prices or an event being implemented which in terms of the contract increase the total of prices or delays delivery or completion;
  - h) capture on the system the date or notify the programme manager / project manager when the certificates identified in Table 13 were issued within one week of them being issued;

**Table 13: Certificates issued in terms of the contract**

<b>Form of contract</b>	<b>Certificate</b>
NEC3 Professional Services Contract	Completion Certificate
NEC3 Engineering and Construction Contract	Completion Certificate Take Over Certificate Defects Certificate
NEC3 Engineering and Construction Short Contract	Completion Certificate Defects Certificate

- i) manage the interface between the contractor and the project leader in obtaining client inputs where a management, design and construct or develop and construct contracting strategy is utilised;
- f) promptly update the package execution plan (PEP) or provide the information to the programme manager / project manager whenever a stage is completed;
- g) develop and maintain a risk register;
- h) ensure that the implementer's requirements for monitoring, reporting and record keeping are adhered to;

- i) provide a monthly report on events which in terms of the contract cause the total of prices to increase or the contract completion date to be changed (compensation events), which if relevant as a minimum contains:
  - 1) the date when a compensation event was notified together with a brief description of the event, a brief reason for the event being notified and whether or not the event has happened or is expected to happen;
  - 2) whether or not quotations have been instructed;
  - 3) the responses to contractor's submissions;
  - 4) changes in the prices and time for completion granted for compensation events which have been finalised;
  - 5) the status of all compensation events and the forecasted accumulative effect of all notified events on the time and the total of prices associated with a contract or batch, task or package order.
- j) immediately notify the programme manager or project manager upon receipt of a Prohibition Notice issued by a health and safety agent;
- k) consult with the programme manager or project manager before:
  - 1) accepting any proposal to change the scope of work to accept a defect;
  - 2) issuing an instruction to stop or not start work after the starting date; or
  - 3) an instruction for acceleration;
- l) report to the programme manager or project manager all insurance claims made within one week of the claim being lodged;
- m) report to the programme manager or project manager any dispute for referral to an adjudicator that is notified by a contractor;
- n) prepare a motivation setting out any dissatisfaction with an adjudicator's decision for consideration by the programme manager or project manager for referral to a tribunal.
- o) provide the programme manager / project manager with adequate notice of the anticipated date of completion of a part or the whole of the works so that the necessary handover arrangements with the client or end user may be made; and
- p) prepare the close out report.

**8.2** The contract manager shall in terms of a target contract adjust the total of prices for inflation in accordance with the requirements of the contract at the specified intervals and submit a monthly report to the programme manager / project manager which contains the following information:

- a) the contractor's latest forecast of total defined cost together with an explanation of any changes made since the last forecast;
- b) the amount due before the deduction of any retention monies;
- c) the total of prices with and without any adjustments for inflation, if relevant;
- d) the forecasted total adjustment to the total of prices for inflation;
- e) the total forecasted defined cost plus the fees for the payment due;

- f) the actual defined cost plus the fees covering the previous payment certificate;
- g) interest due to the contractor or employer for corrections between forecasted and actual defined cost plus the fee for the previous month;
- h) the contractor's planned value, based on the estimated amount that should have been earned at the assessment date in terms of the programme for completed and partially completed activities, where the prices in the activity schedule for partially completed activities are calculated on a pro rata basis; and
- q) the contractor's earned value based on the estimated amount that would have been earned at the assessment date for completed and partially completed activities, where the prices in the activity schedule for partially completed activities are calculated on a pro rata basis.

**8.3** The contract manager shall report on a monthly basis on the following:

- a) the attainment of key performance indicators which:
  - 1) are required by the programme manager / project manager; and
  - 2) form part of the contractor's scope of work;
- b) the number of Improvement, Contravention and Prohibition notices issued by the health and safety agent;
- c) incidents reportable in terms of the Construction Regulations issued in terms of the Occupational Health and Safety Act, briefly indicating the nature of the incident; and
- e) specific key performance indicators required:
  - 1) by a client or funder; and
  - 2) in terms of legislation including the Construction Industry Development Board Act of 2000 (Act No. 38 of 2000)

**8.4** Key performance indicators relating to cost norms shall be compiled by the contract manager in terms of requirements established by the programme manager / project manager in consultation with the client and included in the close out report.

**NOTE** Key performance indicators such as the cost of a road per km or a certain type of building per square metre can provide useful planning information and enable comparisons with other projects of a similar nature to be made.

## **9 Services provided by the supervising agent**

**9.1** The supervising agent shall:

- a) act in accordance with the provisions of the construction contract;
- b) perform level 2 construction monitoring services as described in Table 14, unless otherwise instructed.

**9.2** The supervising agent shall notify the contract manager of any non-conformance on the part of a contractor to the scope of work or instructions issued (defects) prior to completion or any other matter which is likely to significantly increase the costs, delay completion or impair the performance of the works in use.

**Table 14 – Levels of construction monitoring (stage 7)**

<b>Level</b>	<b>Description</b>
<b>1</b>	<ul style="list-style-type: none"> <li>• Monitor the outputs from another party’s quality assurance schedule against the requirements of the plans and specifications.</li> <li>• Visit the works at a suitable frequency to review important materials, critical work procedures and/or completed elements or components.</li> <li>• Be available to advise the constructor on the technical interpretation of the plans and specifications</li> </ul>
<b>2</b>	<ul style="list-style-type: none"> <li>• Review, preferably at the earliest opportunity, a sample of each important:               <ul style="list-style-type: none"> <li>a) work procedure; and</li> <li>b) construction material</li> </ul>               for compliance with the requirements of the works information and review representative samples of important completed work prior to enclosure or completion as appropriate.             </li> <li>• Visit the works at a suitable frequency to review important materials, critical work procedures and/or completed elements or components.</li> <li>• Be available to advise the constructor on the technical interpretation of the plans and specifications</li> </ul>
<b>3</b>	<ul style="list-style-type: none"> <li>• Maintain a part-time presence on site to review random samples and review important completed work prior to enclosure, or on completion, as appropriate.</li> </ul>
<b>4</b>	<ul style="list-style-type: none"> <li>• Maintain a full time presence on site to constantly review:               <ul style="list-style-type: none"> <li>a) work procedures</li> <li>b) construction materials</li> </ul>               for compliance with the requirements of the plans and specifications and review completed work prior to enclosure or on completion as appropriate.             </li> </ul>

**NOTE 1** The Contractor is responsible for providing the works in accordance with the provisions of the contract. Construction monitoring provides an independent verification, to the level required by the implementer, that the works are being completed in accordance with the requirements of the contract, that the designs are being correctly interpreted and that appropriate techniques are being utilised. Construction monitoring creates no contractual relationship between those providing the monitoring services and the contractor outside the NEC3 Contract that applies.

**NOTE 2** The level enables requirements for site staff to be determined.

**9.3** The supervising agent shall record in a book which shall be kept on site in the same place as the health and safety file required in terms of the Occupational Health and Safety Specification for Construction Works Contracts, all site visits and any notifications or instructions to the contractor regarding defects and the rectification thereof which occur prior to completion of the works.

**9.4** The supervising agent shall complete the relevant certificate in Annexure D for inclusion in the record information prior to the completion of the handover stage. Copies of such certifications shall be issued to the contractor.

## **10 Services provided by the health and safety agent**

**10.1** The health and safety agent shall:

- a) assume the responsibilities imposed upon the implementer as a “client” in terms of Regulation 4(5) of the Construction Regulations 2014 issued in terms of the Occupational Health and Safety Act of 1993 in respect of each and every package;
- b) provide services in relation to each of the stages as set out in Tables 6 to 11;
- c) obtain all the necessary documentation to support an application for a construction work permit required in terms of the Construction Regulations 2014 issued in terms of the Occupational Health and Safety Act of 1993
- d) ensure that an application for a construction work permit to perform construction work required in terms of the Construction Regulations 2014 is completed on the prescribed form and

submitted to the provincial director at least 30 days before the construction work is carried out together with:

- 1) the baseline risk assessment;
  - 2) the health and safety specification;
  - 3) a copy of the health and safety agent's contract with the employer;
  - 4) documented proof of the contractor's registration and good standing with the compensation fund or with a licensed compensation insurer as contemplated in the Compensation for Occupational Injuries and Diseases Act, 1993 (Act No. 130 of 1993);
  - 5) a fully completed designer's occupational health and safety declaration (see Annexure B)
  - 6) a fully completed health and safety agent's declaration (see Annexure C)
  - 7) the principal contractor's health and safety plan.
- e) ensure that a contractor who carries out construction work for which a construction work permit is not required, but which in terms of the Construction Regulations 2014 requires that the provincial director be notified, does so at least before the that work is carried out;
- f) issue the contractor with the site specific number for the required work permit
- g) provide the necessary health and safety inputs into the procurement documents
- h) act as the contract manager's or supervising agent's representative, depending upon the NEC3 form of contract that is used, in terms of contracts falling within the scope of the Construction Regulations 2014;
- i) provide services which are consistent with duties assigned to a health and safety agent as set out in the Occupational Health and Safety Specification for Construction Works Contracts;
- j) conduct initial site safety inductions for each professional service provider contracted by the implementer to provide construction related services for a package and each principal contractor appointed to execute a package;
- k) handover to the contract manager upon completion of a package a copy of the principal contractor's health and safety file together with a brief report on the health and safety performance of the contractor;
- l) attend site meetings when specifically requested to do so by the contract manager; and
- m) appoint a suitably qualified safety practitioner to visit the sites at suitable intervals to conduct site inspections for compliance with the requirements of the Occupational Health and Safety Specification for Construction Works Contracts and submit management reports, detailing inspection results and any remedial action required by the principal and / or subcontractors.

**NOTE 1** The Occupational Health and Safety Specification for Construction Works Contracts provides the generic overarching framework within which the contractor is required to demonstrate compliance with certain requirements for occupation health and safety established by the Occupational Health and Safety Act of 1993, establishes the manner in which the contractor is to manage the risk of health and safety incidents in the execution of the contract and establishes the manner in which the employer's health and safety agent will interact with the contractor. The contractor is required to develop, implement and maintain package specific health and safety plans i.e. a documented plan which addresses identified hazards and includes safe work procedures to mitigate, reduce or control the hazards identified. The employer is required to provide certain package specific information to the contractor to enable such plans to be formulated. Accordingly, this generic specification on its own cannot ensure compliance with requirements of the aforementioned Act.

**NOTE 2** The health and safety agent may in terms of the Occupational Health and Safety Specification for Construction Works Contracts issue Improvement Notifications, Contravention Notices and Prohibition Notices, to the contractor concerned and forwarded copies to the contract manager. Such notices require corrective remedial action by the contractor. In the event



that a "life threatening" situation develops on the site, due to negligence, or the lack of preparations, the contractor is required to terminate the activity with immediate effect.

**NOTE 3** It is a requirement of the implementer for all contractors to execute construction works in accordance with the provisions of the Occupational Health and Safety Specification for Construction Works Contracts

**NOTE 4** Following the initial induction, it is responsibility of the principal contractor to conduct all other on-site inductions.

## Annexure A

(informative)

### Incorporating the provisions of this standard in the scope of work of contracts

#### A.1 General

ISO 10845-2, *Formatting and compilation of procurement documentation*, provide informative annexes which list a number of items which are recommended for inclusion in the scope of work of engineering and construction works contracts and service contracts. These standards state that “Some of the topics might not be required where use is made of standards for construction and management requirements, or a generic management specification issued by a particular employer, as these documents might adequately cover these topics. Likewise, the use of certain forms of contract and the adoption of some contracting strategies might obviate the necessity for some of the headings.”

#### A.2 Engineering and construction works contracts

**A.2.1** ISO 10845-2 recommend that the following topics which relate to design are dealt within the scope of work of engineering and construction works contracts:

- “Employer’s Objectives” which describe the employer’s objectives for the delivered end product or the project.
- “Design services and activity matrix” be addressed to identify responsibilities for design and related documentation
- “Employer’s design” which describes the extent of the employer’s design, if any
- “Design brief” which provide the design brief where the contractor is required to provide the works
- “Drawings” which State requirements for drawings to be prepared by the contractor and list all drawings prepared by the employer
- “Design procedures” which establish design procedures where the contractor is responsible for the design

**NOTE 1** It is important to clearly state the employer’s objective for the works and for the overall project should such works form part of a project.

**NOTE 2** Where the design by employer contracting strategy is used with, or without a management contractor, use should be made of SANS 1921-1, *Construction and management requirements for works contracts Part 1: General engineering and construction works*, and if relevant SANS 1921-3, *Construction and management requirements for works contracts Part 3: Structural Steelwork*, to develop the scope of work. These standards require the contractor to design the temporary works and, in the case of structural steel work, to provide the design of simple connections that are not intended to transfer bending moment, fabrication drawings and erection mark drawings, if so required in terms of the specification data.

**NOTE 3** Where the management contractor is responsible for the design of the works, the client’s strategic brief needs to be incorporated in the scope of work

**A.2.2** The manner in which the provisions of this standard can be incorporated by reference into the scope of work of an engineering and construction works contract where the contractor is responsible for design activities other than those associated with a specialist subcontractor is illustrated in Example 1.

EXAMPLE 1 Incorporating the standard in an engineering and construction works contract which allocates design responsibilities to the contractor

**Design and planning services**

1 The Contractor shall perform the activities and develop the end of stage deliverables associated with the following stages in the Standard Scope of Professional Services associated with the delivery of a Package

:  
.....\*

\*Insert stages, depending upon which contracting strategy is selected

Stage	Contracting strategy		
	Management contractor	Design and construct	Develop and construct
Stage 4: Package definition	contractor	employer	employer
Stage 5: Design development	contractor	contractor	employer
Stage 6A: Production information	contractor	contractor	contractor

2 The contractor is required to design all temporary works

**Employer’s design**

The employer’s design is contained in annexure .....\*

\*Insert one of the following documents in the annexure, depending upon the selected contracting strategy

Contracting strategy	
Design and construct	Develop and construct
Concept report	Design development report

**Design procedures**

- 1 The Contractor shall prepare the end of stage deliverable(s) for acceptance by the Employer.
- 2 The Contractor shall engage with the Employer’s professional services providers appointed to undertake review services in accordance with the requirements of the Standard Scope of Professional Services associated with the Delivery of a Package in the finalisation of the deliverables. The Contractor shall respond to issues of clarity raised by the Employer’s professionals and provide additional information that they may require to enable the Employer to take a decision on the deliverable.

**A.3 Services contract**

A.3.1 ISO 10845-2 recommend that topics such as the following are included in services contracts:

- “Client’s or employer’s objectives” which describes the client’s or employer’s overarching objectives for the project, including, if necessary, the time frames for completion and expected outcomes.
- “Background” which contextualizes the project and provides sufficient background information and available data to enable a response to stated and perceived requirements to be made or provides the necessary background to enable a better understanding of the client’s objectives, e.g. the background could include the rationale of the project, the project history (what has been done so far and by whom), a list of relevant studies and basic data, the need for the services and an outline of the issues which needs to be resolved.
- “Description of the services” which provides a short description or outline of the extent of the services and outlines what the key deliverables are.
- “Requirements” which should state that the service shall satisfy the stated objectives of the employer in relation to the services identified in the description of services and establish minimum requirements, i.e. what is expected in relation to specific tasks, or functions in relation to the services that are to be provided to achieve the expected results.
- “Reference data” which states the reports, surveys, agreements, etc. upon which the contractor is to base the service, if any, e.g. past studies, aerial photographs, maps, or records of surveys carried out in the assignment area.

- Particular/generic specifications which should be drafted such that they:
  - contain acceptance procedures to enable compliance to be determined;
  - specify requirements uniquely and unambiguously;
  - preferably state what is to be provided and not how it is to be provided.

**NOTE** Many of the aforementioned topics or aspects thereof are addressed in this standard.

**A.3.2** The manner in which the provisions of this standard can be incorporated by reference into the scope of work of a professional service contract is illustrated in Example 2.

*EXAMPLE 2 Incorporating the standard in a professional services contract*

**Description of the services**

2 *The Consultant is required to provide services for .....\**

\* Describe the project, the site and particular elements of the construction for which the consultant provides services.

2 *The construction procurement strategy for the packages associated with the service is .....\**

\*Describe strategy (i.e. packaging, contracting, pricing and targeting strategy) so that the Consultants understand the level of detail and the precise services that are required.

3 *The Consultant shall provide the services in accordance with the relevant requirements of the Standard scope of professional services associated with the delivery of a package in respect of the following stages\**

\*List the applicable stages or state stages, e.g. 4 to 9

4 *The Consultant shall only provide review services in relation to stages .....as the contracting strategy adopted by the Employer for the works is the ..... strategy\**

\*Delete 4 if not applicable or describe the stages and the adopted contracting strategy – see Tables 1 and 2.

5 *The Consultant shall provide ..... services and perform the role of ..... in relation to such services.\**

\*Identify the required services e.g. from Table 3 in the case of services relating to buildings e.g. Fire safety . State the role to be performed i.e. project leader, lead designer, designer or cost consultant or any combination thereof.

6 *The Consultant shall perform the role of ..... in terms of the .....\**

\*State the role from Table 12 and the form of contract that is to be used e.g. the principal agent in terms of the JBCC Principal Building Agreement.

7 *The required level of construction monitoring is level ..... as described in Table 13*

\*State the level i.e. 1, 2, 3 or 4

9 *The following services are not required.....*

\*Delete if all design and planning services are required or state what is not required where other perform such services e.g. the Employer obtains certain statutory permissions.

10 *The following additional services are required:*

\*Delete if there are none or state what they are.

## Annexure B Designer’s occupational health and safety declaration in terms of the Construction Regulations 2014

**Description of the works** (*briefly describe the works*): . . . . .

I, having the design responsibility as stated below, hereby declare with respect to the abovementioned works that:

- a) I have received a copy of the health and safety specification from the client;
- b) I have taken the prepared health and safety specification into consideration in my designs; and
- c) I have complied with the requirements of regulation 6 in the execution of my duties as a designer in relation to the development and documentation of the my designs;

Name of designer and professional registration number	Design responsibility	Company	Postal address and telephone number	Signature
	Architectural design			
	Acoustic design			
	Civil engineering			
	Electrical engineering			
	Facade engineering			
	Fire safety			
	Landscape architectural design			
	Mechanical engineering			
	Structural engineering			
	Wet services			

(delete what is not applicable / amend as necessary)

**Annexure C: Health and safety agent’s declaration**

**Name of client:** .....

Postal address: .....

Telephone number: .....

**Description of the works** (*briefly describe the works*): .....

Contract no: .....

Physical address of the construction site and office: .....

Nature of construction work: .....

Expected commencement date: .....

Expected completion date: .....

Estimated maximum number of persons on the construction site; .....

**Name of health and safety agent:** .....

Identity number / passport number: .....

SACPMP registration number: .....

Telephone no: .....

Cell No: .....

Postal address: .....

**Name of principal contractor:** .....

Postal address: .....

Telephone number: .....

**Name of construction manager:**

Postal address: .....

Telephone number: .....

**Name of construction health and safety manager:** .....

Postal address: .....

Telephone number: .....

**Name of health and safety officer:** .....

Postal address: .....

Telephone number: .....

**Contractors accountable to the principal contractor**

Planned number: .....

Names of contractors appointed:

.....

I ..... (name) ..... (postal address),...  
..... (telephone no) being the appointed health and safety agent hereby confirm that:

1) confirm that:

- a) the health and safety specification was included in the procurement documents issued to tenderers / contractor (delete that which does not apply);
- b) the principal contractor has been appointed in terms of a written contract;
- c) the principal contractor is registered and in good standing with the compensation fund / with a licensed compensation insurer as contemplated in the Compensation for Occupational Injuries and Diseases Act, 1993 (Act No. 130 of 1993) (delete that which does not apply);
- d) principal contractor's health and safety plan is approved for implementation;
- e) am appointed to:
  - ensure that during construction the principal contractor makes copies of the health and safety plan available on request to employees, inspectors or contractors,
  - take reasonable steps to ensure that each principal contractor's and each contractors' health and safety plan is implemented and maintained;
  - conduct periodic health and safety audits and document verification at intervals not exceeding one month and provide copies of an audit report to the principal contractor within 7 days of such audit;
  - stop any contractor executing a construction activity which is not in accordance with the health and safety specification and the principal contractor's health and safety plan;
  - ensure that the scope of work is amended to reflect additional health and safety information arising from a change to the design or construction work; and
  - ensure that the principal contractor keeps and maintains a health and safety file.

2) am reasonably satisfied that:

- a) the designers took into account the health and safety specification in their designs; and
- b) the principal contractor has made adequate provision for the cost of health and safety measures in his tender and has the necessary competencies and resources to carry out the construction works safely.

3) I confirm that.

Signed

Date

.....  
Name

.....

.....

## Annexure D: Completion certificates

<b>Certificate</b>	<b>Title</b>	<b>Service</b>
D1	Means by which Regulation AZ.4 of the National Building Regulations has been satisfied In respect of the Permanent Works	Architectural design
D2	Civil engineering works	Civil engineering
D3	Electrical works	Electrical engineering
D4	Fire protection system	Fire safety
D5	Landscaping architectural works	Landscape architectural design
D6A	Energy usage in buildings	Mechanical engineering
	Mechanical works	
	Ventilation system	
D7A	Structural system subject to the National Building Regulations	Structural engineering
D7B	Structural system not subject to the National building regulations	
D8A	Fire installation	Wet services
D8B	Drainage installation / non-water borne sanitation disposal system / stormwater disposal system certificate	
DBC	Water installation	



## Certificate D1

### Means by which Regulation AZ.4 of the National Building Regulations has been satisfied In respect of the Permanent Works

Project title

Project number

Buildings and associated siteworks covered by certificate

Occupancy / Building classification(s)

(see Regulation A20)

#### Part 1: General requirements

1			2	3
Applicability to application (tick column 2 or 3)			Means of satisfying requirements of functional regulations (tick relevant boxes in columns 4 or 5)	
Regulation	yes	no	Deemed to satisfy provisions contained in relevant parts of SANS 10400	Regulation AZ4(1)(b)(ii)
<b>B: Structural Design</b>			The structural system of the building: complies with the requirements of parts H, J, K, L, M or N of SANS 10400 or in the case of timber buildings with the provisions of SANS 10082; is the subject of a rational design or a rational assessment is the subject of an Agrément certificate; or The following competent persons were appointed: competent person (structures) to design and inspect the structures competent person (civil engineering) to design and inspect the services in dolomite land competent person (dolomite land) to categorise dolomite land	
<b>C: Dimensions</b>			The dimensions of any room or space are in accordance with the detailed requirements of SANS 10400-C	
<b>D: Public safety</b>			A change in level, the design of ramps and driveways, or access to swimming pools and swimming baths is in accordance with the detailed requirements of SANS 10400-D	
<b>F: Site operations</b>			The protection against subterranean termites is in accordance with the detailed requirements of SANS 10400-F	
<b>H: Foundations</b>			A geotechnical investigation was carried out	-
			The foundations for the building are in accordance with: the requirements of SANS 10400-B the detailed requirements of SANS 10400-H	
			The foundations to the extension / addition to an existing building are the same as the existing which have performed satisfactorily	
			A competent persons undertook responsibility for deep footings, soil rafts, compaction of in-situ soil or sub-surface drainage geotechnical solutions or soil improvement that were required	
<b>J: Floors</b>			Floors in any laundry, kitchen, shower-room, bathroom or room containing a WC pan or urinal are in accordance with the detailed requirements of SANS 10400-J	
			Suspended floors are in accordance with: the requirements of SANS 10400-B and SANS 10400-T the requirements of SANS 10082 the detailed requirements of SANS 10400-J	
			Slabs supported on the ground are in accordance with: SANS 10400-B SANS 10400-H the detailed requirements of SANS 10400-J	
<b>K: Walls</b>			The structural strength and stability of a wall is in accordance with: SANS 10400-B and SANS 10400-T the detailed requirements of SANS 10400-K	
			The roof fixing is in accordance with: SANS 10400-B the detailed requirements of SANS 10400-K	
			The water penetration through a wall is in accordance with the detailed requirements of SANS 10400-K	

1		2		3
Regulation	yes	no	Deemed to satisfy provisions contained in relevant parts of SANS 10400	Regulation AZ4(1)(b)(ii)
<b>L: Roofs</b>			Roof coverings and waterproofing systems are in accordance with the detailed requirements of SANS 10400-L	
			Flat roofs or related gutters are: in accordance with the detailed requirements of SANS 10400-L; or the subject of a rational design or rational assessment (or both)	
			The roof assembly and any ceiling assembly, in addition to complying with the requirements of SANS 10400-C, are: in accordance with the requirements of the detailed requirements of SANS 10400-L and the roof assembly is supported on walls that comply with the requirements of SANS 10400-K SANS 10400-B and SANS 10400-L	
			gutters and downpipes, if any, are sized in accordance with the requirements of SANS 10400-R	
			The fire resistance and combustibility of the roof assembly or any ceiling assembly are in accordance with: the detailed requirements of SANS 10400-L SANS 10400-T	
<b>M: Stairways</b>			Stairways are in accordance with SANS 10400-B and SANS 10400-T the detailed requirements of SANS 10400-M	
			Walls, screens, railings or balustrades to such stairway are in accordance with the provisions of: SANS 10400-B and SANS 10400-T SANS 10400-K and SANS 10400-T.	
<b>N: Glazing</b>			The type and fixing of glazing is in accordance with: SANS 10400-B the detailed requirements of SANS 10400-N	
			The selection of the glazing is in accordance with the detailed requirements of SANS 10400-N	
<b>O: Lighting and ventilation</b>			The lighting in a habitable room, bathroom, shower room and room containing a toilet pan complies with the requirements of SANS 10400-T and the detailed requirements of SANS 10400-O.	
			The ventilation is in accordance with the requirements of SANS 0400-T and: is in accordance with the detailed provisions of SANS 10400-O is the subject of a rational design	
<b>P: Drainage</b>			The design of the drainage system is in accordance with the detailed provisions of SANS 10400-P; the subject of a rational design or rational assessment the subject of an Agrément certificate	
<b>Q: Non-waterborne means of sanitary disposal</b>			The means of sewage disposal where water borne sewerage disposal is not available: is in accordance with the detailed provisions of SANS 10400-Q; is the subject of a rational design or rational assessment is the subject of an Agrément certificate	
<b>R: Storm water disposal</b>			The means for the control and disposal of stormwater is in accordance with the detailed provisions of SANS 10400-R is the subject of a rational design	
			The means for the control and disposal of stormwater interconnected complexes is the subject of a rational design	
<b>S: People with disabilities</b>			The means for providing facilities for people with disabilities is in accordance with the detailed requirements of SANS 10400-S is the subject of a rational design	
<b>T: Fire protection</b>			The fire protection measures provided are: in accordance with the detailed requirements of SANS 10400-T the subject of a rational design or rational assessment	
<b>V: Space heating</b>			The provision of space heating is in accordance with the detailed requirements of SANS 10400-V	
<b>W: Fire installation</b>			The fire installations comply with the detailed requirements of SANS 10400-W	
			The supply of water is: in accordance with the detailed requirements of SANS 10400-W the subject of a rational design	

1			2	3
Regulation	yes	no	Deemed to satisfy provisions contained in relevant parts of SANS 10400	Regulation AZ4(1)(b)(ii)
XA: Energy Usage			The building: has an orientation, shading, services and building envelope in accordance with SANS 10400 Part XA is the subject of a rational design which demonstrates acceptable energy usage is the subject of an assessment which demonstrates acceptable theoretical energy usage performance	

## Part 2: Engineering appointments

1		2	3	4
Applicability		Duties	Name of registered engineering professional	Professional registration number
Yes	No			
		Design and inspection of services in dolomite land in terms of SANS 10400-B		
		Specify and inspect, as relevant, deep footings, soil rafts, compaction of in-situ soil or sub-surface drains in terms of SANS 10400-H		
		Design and inspect slabs and fills in terms of SANS 10400-J		
		Rational design of control and disposal of stormwater in terms of SANS 10400-R or <b>Reg R(3)</b>		
		Rational design of control and disposal of stormwater in interconnected complexes in terms of SANS 10400-R.		
		Rational design or rational assessment of fire protection system in terms of SANS 10400-T or <b>Reg T1(2)</b>		
		Design and inspect geotechnical solutions or soil improvement in terms of SANS 10400-H		
		Rational design of ventilation system in terms of SANS 10400-O and <b>Reg O4</b>		
		Rational design or rational assessment of drainage system in terms of SANS 10400-P or <b>Reg P2(2)</b>		
		Rational design or rational assessment of sewage disposal in terms of SANS 10400-Q or <b>Reg Q3</b>		
		Rational design or rational assessment of structural system in terms of SANS 10400-B taking account of parts H, J, K, L, M, N of SANS 10400 or <b>Regs A(1)(3), A23(4)</b>		
		Rational design of roof in terms of parts B and L SANS 10400 where the foundations, floors and walls are in accordance with the rules provided in parts H, J and K of SANS 10400.		
		Rational design of supply of water to fire installations in terms of SANS 10400-W or <b>Reg W4</b> .		
		Rational design or assessment taking account of the provisions of SANS 10400-XA which demonstrates compliance with the requirements of <b>Reg XA1</b>		
		Other (describe)		

### Part 3: Fire protection – competent persons

Note: These appointments are in addition to those for Rational design or rational assessment of fire protection system in terms of SANS 10400-T or Reg T1(2)

Applicability		Clause	Responsibility	Name of registered engineering professional	Professional registration number
Yes	No				
		4.2.7, 4.4, 4.8.2, 4.16.4, 4.26.1, 4.36.1 and 4.48.6	Design, install and maintain automatic sprinkler system in accordance with the requirements of SANS 10287 (2000)		
		4.12.2.4	Design and install a lightning protection system in accordance with the requirements of SANS 10313:2008 and SANS 62305-3:2007		
		4.25	Design, install, test and maintain the pressurization of emergency routes and components in accordance with the requirements of EN 12101.		
		4.31.1, 4.31.2, 4.31.3, 4.43.2, 4.48.3 and 4.48.6	Design, install and maintain a fire detection and alarm system in accordance with the requirements of SANS 10139		
		4.36.1	Design, install and maintain a fixed automatic fire-fighting system that is in accordance with the requirements of SANS 306-4 or SANS 14520-1		
		4.37.3	Install, maintain and service portable fire extinguishers in accordance with the requirements of SANS 1475-1 and SANS 10105-1.		
		4.52.4	Direct the construction and installation of a tank in accordance with the requirements of SANS 10089-3.		
		4.53.1.1	The design, erection and protection of liquid petroleum gas storage in accordance with the requirements of SANS 10087-3.		
		4.52.4 and 4.53.1.3	Direct the installation of diesel fuel installation in accordance with the requirements of SANS 10131.		
		4.55.1	Perform a rational assessment of building materials and components to determine their fire resistance.		

I hereby certify that all the above information is to the best of my knowledge and belief, true and correct and the architectural works is generally in accordance with the production information that was issued to the contractor to enable construction or the production of manufacturing and installation information for construction.

I furthermore declare the building to be safe for use in terms of Regulation 6(1)(j) of the Construction Regulations 2014

**Signature of professional responsible for the design of the building**      **Date:**

**Name:**      **SACAP registration number**

**Certificate D2:**

**Civil engineering works**

**Project title**

**Project number**

**Works covered by certificate (*describe*)**

I hereby certify that the works for which I am responsible has, to the best of my knowledge been designed and constructed in accordance with all statutory requirements and is generally in accordance with the production information that was issued to the contractor to enable construction or the production of manufacturing and installation information for construction.

I confirm that the design and construction of such work were in accordance with the following:

Design standard applied	
Critical design parameters	
Basic engineering properties of materials / type of materials	
Construction standards applied	
Tests (state type, frequency, range of results and comment on implications of non-compliances)	
Critical assumptions, if any	

I furthermore declare the works to be safe for use

**Signature of professional responsible for the design of the works**

**Date:** .....

**Name** .....

**Professional registration number:** ..... **Registration council: ECSA**  
*(Insert number)*

**Certificate D3:**

**Electrical works**

**Project title**

**Project number**

**Works covered by certificate** *(describe)*

I hereby certify that the works for which I am responsible has, to the best of my knowledge been designed and constructed / erected / installed in accordance with all statutory requirements and is generally in accordance with the production information that was issued to the contractor to enable construction or the production of manufacturing and installation information for construction.

I furthermore declare the works to be safe for use

**Signature of professional responsible for the design of the works**

**Date:** .....

**Name:** .....

**Professional registration number:** ..... **Registration council: ECSA**  
*(Insert number)*

**Certificate D4**

**Fire Protection System**

*(Provide if a rational design is required in terms of Regulation T1(2) or Part T of the National Building Regulations is satisfied by means of a rational design or rational assessment i.e. not solely in terms of the rules contained in SANS 10400-T)*

**Project title**

**Project number**

**Buildings covered by certificate** *(describe)*

**Occupancy / Building classification(s)**

*(see Regulation A20)*

I hereby certify as required by Section 14(2)(a) of the National Building Regulations and Building Standards Act, 1977 (Act No. 103 of 1977) that the fire protection system for which I am responsible has, to the best of my knowledge been designed and constructed / erected / installed in accordance with the requirements of the National Building Regulations and is generally in accordance with the production information that was issued to the contractor to enable construction or the production of manufacturing and installation information for construction.

My rational design / rational assessment is based on the following *(outline)*:

Attach the report developed in terms of B.2.5 of Annex B (Rational Designs) if applicable

I confirm that the design of the following elements of the fire protection system were carried out under my direction by the following other competent persons in terms of Regulation A19(8):

*(Complete if parts of the system were designed by others)*

Element	Name	Professional registration no

I furthermore declare the system to be safe for use in terms of Regulation 6(1)(j) of the Construction Regulations 2014

I furthermore declare the system to be safe for use

**Signature of Approved Competent Person responsible for the fire protection system (Regulation A19(7) and A19(8))**

**Date** .....

**Name** .....

**Professional registration number:** ..... **Registration council: ECSA**  
*(Insert number)*

**Certificate D5:**

**Landscape architectural works**

**Project title**

**Project number**

**Works covered by certificate (*describe*)**

I hereby certify that the works for which I am responsible has, to the best of my knowledge been designed and constructed in accordance with all statutory requirements and is generally in accordance with the production information that was issued to the contractor to enable construction or the production of manufacturing and installation information for construction.

I furthermore declare the works to be safe for use

**Signature of professional responsible for the design of the landscape architectural works**

**Date: .....**

**Name .....**

**Professional registration number: ..... Registration council: SACLAP**  
*(Insert number)*



**Certificate 6A**

**Energy usage in buildings**

*(Provide if Regulation XA1 is satisfied by preparing a rational design which demonstrates acceptable energy usage or performing an assessment which demonstrates acceptable theoretical energy usage performance)*

**Project title**

**Project number**

**Buildings covered by certificate** *(describe)*

I hereby certify that I have in accordance with the requirements of Regulation XA3 the National Building Regulations to (tick the appropriate box):

prepared a rational design which demonstrates acceptable energy usage

performed an assessment which demonstrates acceptable theoretical energy usage performance

**My rational design / assessment is based on the following methodology and key assumptions:**

I hereby further certify as required by Regulation A19(12)(c) of the National Building Regulations that the energy usage measures for the above project for which I am responsible has, to the best of my knowledge, been designed and constructed / erected / installed in accordance with the requirements of the National Building Regulations and is generally in accordance with the production information that was issued to the contractor to enable construction or the production of manufacturing and installation information for construction.

**Signature of Approved Competent Person responsible for ensuring that Energy Usage Regulations are satisfied**

**Date** .....

**Name** .....

**Professional registration number:** ..... **Registration council:** .....  
*(Insert number)*

**Certificate D6B**

**Mechanical works**

**Project title**

**Project number**

**Works covered by certificate** *(describe)*

I hereby certify that the works for which I am responsible has, to the best of my knowledge been designed and constructed / erected / installed in accordance with all statutory requirements and is generally in accordance with the production information that was issued to the contractor to enable construction or the production of manufacturing and installation information for construction.

I confirm that the design and construction of such work were in accordance with the following:

Design standard applied	
Critical design parameters	
Basic engineering properties of materials / type of materials	
Construction standards applied	
Tests (state type, frequency, range of results and comment on implications of non-compliances)	
Critical assumptions, if any	

I furthermore declare the works to be safe for use

**Signature of professional responsible for the design of the works**

**Date:** .....

**Name** .....

**Professional registration number:** ..... **Registration council:** ECSA  
*(Insert number)*

**Certificate 6C**

**Artificial ventilation system**

**Project title**

**Project number**

**Buildings covered by certificate (describe)**

**Occupancy / Building classification(s)**

A20)

(see Regulation

I hereby certify that the artificial ventilation system for which I am responsible has, to the best of my knowledge been designed and installed in accordance with the requirements of the National Building Regulations and is generally in accordance with the production information that was issued to the contractor to enable construction or the production of manufacturing and installation information for construction.

My rational design / rational assessment is based on the following (*outline if not in accordance with the requirements of the relevant part of SANS 10400*):

I confirm that the design of the following elements of the artificial ventilation system were carried out under my direction by the following other competent persons in terms of Regulation A19(8):

(*Complete if parts of the system were designed by others*)

Element	Name	Professional registration no

I furthermore declare the system to be safe for use in terms of Regulation 6(1)(j) of the Construction Regulations 2014

**Signature of Approved Competent Person responsible for the fire protection system (Regulation A19(7) and A19(8)**

**Date** .....

**Name** .....

**Professional registration number:** ..... **Registration council: ECSA**  
(*Insert number*)

## Certificate D7A

### Structural system subject to the National Building Regulations

*(Provide if a rational design or rational assessment of the structure is required in terms of Regulations A(1)(3), A23(4) or the structural aspects of Parts J, H, K, L, M or N of the National Building Regulations is satisfied by means of a rational design or rational assessment i.e. not solely in terms of the rules contained in Parts J, H, K, L or M of SANS 10400)*

**Project title**

**Project number**

**Buildings and associated siteworks**

**covered by certificate** *(describe)*

**Occupancy / Building classification(s)**

*(see Regulation A20)*

I hereby certify as required by Section 14(2)(a) of the National Building Regulations and Building Standards Act, 1977 (Act No. 103 of 1977) that the structural system for which I am responsible has, to the best of my knowledge, been designed and constructed / erected / installed satisfies the requirements of the National Building Regulations and is in accordance with the production information that was issued to the contractor to enable construction or the production of manufacturing and installation information for construction.

I confirm the following:

#### 1 Key geotechnical parameters used in the design

*(State)*

#### 2 Design and construction of structural elements

*(Delete elements which do not apply, provide separate tabulations for each element)*

##### Roof / Walls / Floors / Staircases / Foundations / Facades

Design standard applied	
Loads (outline)	
Basic engineering properties of structural materials	
Construction standards applied	
Tests (state type, frequency, range of results and comment on implications of non-compliances)	
Critical assumptions, if any	

#### 3 Design carried out by other competent persons in terms of Regulation A19(8)

I confirm that the design of the following elements of the structural system were carried out under my direction by the following other competent persons in terms of Regulation A19(8):

*(Complete if parts of the system were designed by others)*

Element	Name	Professional registration no

I furthermore declare the structure to be safe for use in terms of Regulation 6(1)(j) of the Construction Regulations 2014

Signature of Approved Competent Person responsible for the structural system in its entirety (Regulation A19(7) and A19(8))

Date .....

Name .....

Professional registration number: ..... Registration council: ECSA  
*(Insert number)*

**Certificate 7B**

**Structural system not subject to the National Building Regulations**

*(delete that which does not apply and complete where such works are not covered by National Building Regulations)*

**Project title**

**Project number**

**Works covered by certificate** *(describe)*

I hereby certify that the works for which I am responsible has, to the best of my knowledge been designed and constructed / erected / installed in accordance with all statutory requirements and is generally in accordance with the production information that was issued to the contractor to enable construction or the production of manufacturing and installation information for construction.

I confirm that the design and construction of such work were in accordance with the following:

Design standard applied	
Critical design parameters	
Basic engineering properties of materials / type of materials	
Construction standards applied	
Tests (state type, frequency, range of results and comment on implications of non-compliances)	
Critical assumptions, if any	

I furthermore declare the structure to be safe for use in terms of Regulation 6(1)(j) of the Construction Regulations 2014

**Signature of professional responsible for the design of the structure**      **Date:** .....

**Name** .....

**Professional registration number:** .....      **Registration council:** ECSA  
*(Insert number)*

**Certificate 8A**

**Fire Installation Certificate**

*(Provide if a rational design is required in terms of Regulation W4 or if Part W of the National Building Regulations is satisfied by means of a rational design or rational assessment i.e. not solely in terms of the rules contained in SANS 10400-W)*

**Project title**

**Project number**

**Buildings covered by certificate** *(describe)*

**Occupancy / Building classification(s)**

*(see Regulation A20)*

I hereby certify as required by Section 14(2)(a) of the National Building Regulations and Building Standards Act, 1977 (Act No. 103 of 1977) that the fire installation system for which I am responsible has, to the best of my knowledge been designed and constructed / erected / installed in accordance with the requirements of the National Building Regulations and is generally in accordance with the production information that was issued to the contractor to enable construction or the production of manufacturing and installation information for construction.

My rational design / rational assessment is based on the following *(outline if not in accordance with the requirements of SANS 10252-1, and if relevant, SANS 10287)*:

I confirm that the design of the following elements of the fire installation system were carried out under my direction by the following other competent persons in terms of Regulation A19(8):

*(Complete if parts of the system were designed by others)*

Element	Name	Professional registration no

I furthermore declare the system to be safe for use

**Signature of Approved Competent Person responsible for the fire protection system (Regulation A19(7) and A19(8))**

**Date** .....

**Name** .....

**Professional registration number:** ..... **Registration council: ECSA**  
*(Insert number)*

**Certificate 8B**

**Drainage installation / non-water borne sanitation disposal system / stormwater disposal system** *(delete that which does not apply)*

*(Provide where regulations O(4), P(2), Q(3) or R(3) require an approved competent person to provide a rational design or where the artificial ventilation, non-water borne sanitation or stormwater disposal system of drainage installation is satisfied by means of a rational design or rational assessment i.e. not solely in terms of the rules contained in Parts O, Q, R or P, respectively.)*

**Project title**

**Project number**

**Buildings covered by certificate** *(describe)*

**Occupancy / Building classification(s)**

*(see Regulation A20)*

I hereby certify that the artificial ventilation system / drainage installation / non-water borne sanitation system / stormwater disposal system *(delete that which does not apply)* for which I am responsible has, to the best of my knowledge been designed and constructed / erected / installed in accordance with the requirements of the National Building Regulations and is generally in accordance with the production information that was issued to the contractor to enable construction or the production of manufacturing and installation information for construction.

My rational design / rational assessment is based on the following *(outline if not in accordance with the requirements of the relevant part of SANS 10400)*:

I confirm that the design of the following elements of the artificial ventilation system / drainage installation / non-water borne sanitation system / stormwater disposal system *(delete that which does not apply)* were carried out under my direction by the following other competent persons in terms of Regulation A19(8):

*(Complete if parts of the system were designed by others)*

Element	Name	Professional registration no

I furthermore declare the installation to be safe for use in terms of Regulation 6(1)(j) of the Construction Regulations 2014

**Signature of Approved Competent Person responsible for the fire protection system (Regulation A19(7) and A19(8))**

**Date:** .....

**Name** .....

**Professional registration number:** ..... **Registration council: ECSA**  
*(Insert number)*

**Annexure 8C**

**Certificate for water installation in buildings**

**Project title**

**Project number**

**Buildings covered by certificate** *(describe)*

**Occupancy / Building classification(s)**

*(see Regulation A20)*

I hereby certify that the water installation to the best of my knowledge satisfies the requirements of Regulation 14 of the Water Services Act of 1997 (Act 108 of 1997) in that the water installation complies with the provisions of SANS 10252, *Water Supply and Drainage for Buildings*, and, where relevant, SANS 10254, *The installation of fixed electric Storage Water Heating Systems*.

I furthermore declare the installation to be safe for use

**Signature**

**Date** .....

**Name** .....

**Professional registration number:** ..... **Registration council:** .....  
*(Insert number and council if applicable)*